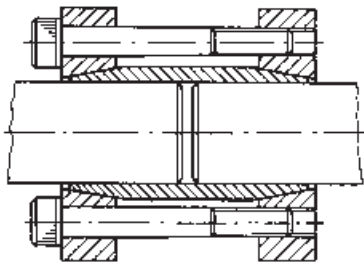


Clamping Elements Type RCK 95



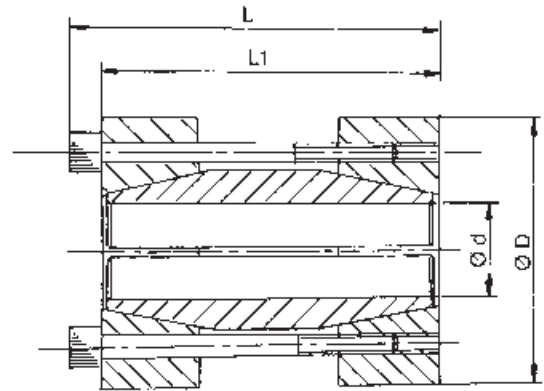
Similar in design to the Clamping Discs, type RCK 19, but with the discs spaced further apart to enable connection to more than one shaft, enabling use as a rigid shaft coupling. These units can be used to connect two identical diameter shafts which are perfectly aligned, or to produce a longer shaft which is only mounted in two bearings. Torque capacities are suitable for standard shafting. These units provide zero backlash shaft connection with advantage of fast assembly and disassembly. The design makes the unit equally suitable for horizontal and vertical shafts, capable of withstanding high axial loads.

Recommended tolerances for full torque transmission shafts should be to h8 tolerance with surface finish $Rz \leq 15 \mu\text{m}$.



Warning

The units are not flexible couplings, and must never be used as such. Any radial loads on shafts must be adequately supported by bearing assemblies.



Dimensions

Part No.	Dimensions mm				Torque Cap. M Nm	Axial Force F kN	Shaft Surface Pressure Ps N/mm ²	Clamping Screws		Approx Weight gms
	d	D	L	L ₁				Size	Torque Nm	
RCK95-17x50	17	50	56	50	200	21	110	M6	17	0.46
RCK95-18x50	18	50	56	50	220	22	110	M6	17	0.45
RCK95-19x50	19	50	56	50	230	22	110	M6	17	0.44
RCK95-20x50	20	50	56	50	240	22	105	M6	17	0.44
RCK95-24x55	24	55	66	60	290	22	120	M6	17	0.63
RCK95-25x55	25	55	66	60	450	32	110	M6	17	0.65
RCK95-28x60	28	60	66	60	510	33	110	M6	17	0.75
RCK95-30x60	30	60	66	60	550	33	105	M6	17	0.71
RCK95-32x63	32	63	66	60	580	33	90	M6	17	0.73
RCK95-35x75	35	75	83	75	760	39	105	M8	41	1.33
RCK95-38x75	38	75	83	75	850	40	100	M8	41	1.20
RCK95-40x75	40	75	83	75	900	41	95	M8	41	1.19
RCK95-42x78	42	78	83	75	930	40	90	M8	41	1.28
RCK95-45x85	45	85	93	85	1520	61	110	M8	41	1.72
RCK95-48x90	48	90	93	85	1600	60	100	M8	41	1.90
RCK95-50x90	50	90	93	85	1690	61	95	M8	41	1.88
RCK95-55x94	55	94	93	85	2430	80	110	M8	41	2.00
RCK95-60x100	60	100	93	85	2680	80	95	M8	41	2.17
RCK95-65x105	65	105	93	85	2900	80	90	M8	41	3.95
RCK95-70x115	70	115	110	100	3720	96	90	M10	83	5.25
RCK95-75x125	75	125	110	100	3970	95	80	M10	83	5.46
RCK95-80x125	80	125	110	100	4280	96	70	M10	83	5.30
RCK95-90x135	90	135	110	100	5400	108	70	M10	83	5.60
RCK95-100x155	100	155	132	120	8700	157	100	M12	143	7.00

For assembly and disassembly instructions refer to page 24.