

# Timing Belt Clamping Plates and Timing Bars



## Timing Belt Clamping Plates

For the simple retention of open ended timing belts used on conveying or reciprocating drives, a standard range of clamping plates is available for all the heavier pitch belts. Manufactured in aluminium, these clamping plates provide accurate location of the belts.

### Clamping Plates for HTD Belts

Belt Pitch Size	F	d	B	A	S	L (Belt Width Code)							
						20	30	40	50	55	85	115	170
						C							
8M	8	9	5	66	15	45	55		75		110		
14M	10	11	9	116	22			71		86	116	146	201

### Clamping Plates for Classical Series Belts

Belt Pitch Size	F	d	B	A	S	L (Belt Width Code)				
						025	037	050	075	100
						C				
XL	6	5.5	3.5	42.5	8	25.5	28.5			
L	8	9	5	76.6	15			39	45	51.5
H	10	11	9	106.9	22			45	51	57.5

### Clamping Plates for 'T' Series Belts

Belt Pitch Size	F	d	B	A	S	L (Belt Width Code)				
						10	16	25	32	50
						C				
T5	6	5.5	3.2	41.8	8	29	35	44		
T10	8	9	5	80	15		41	50	57	75

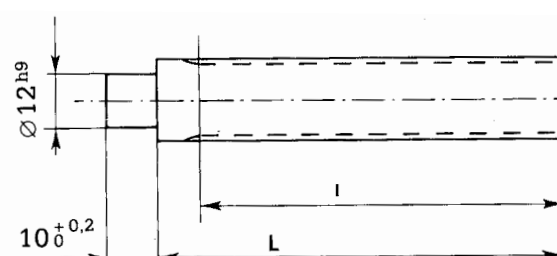
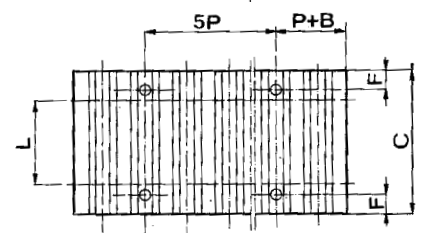
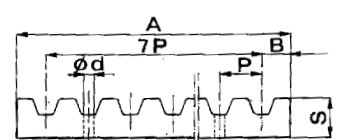
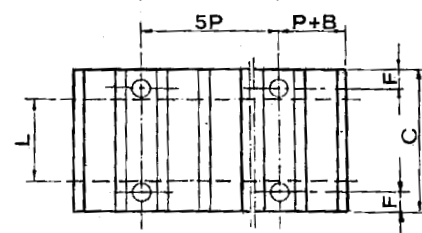
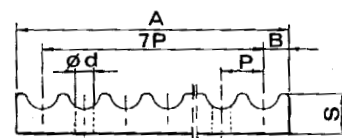
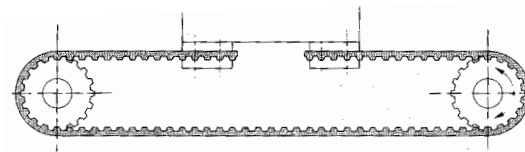
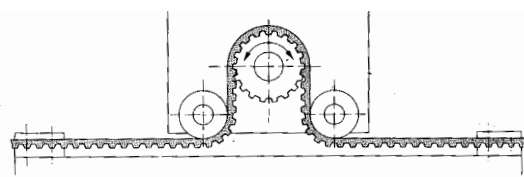
### Clamping Plates for 'AT' Series Belts

Belt Pitch Size	F	d	B	A	S	L (Belt Width Code)				
						10	16	25	32	50
						C				
AT5	6	5.5	3.2	41.8	8	29	35	44		
AT10	8	9	5	80	15		41	50	57	75

## Timing Bars

For extra wide belt drives and to manufacture special pulleys. Available in tooth sizes indicated in following table of standard bar sizes.

No. Teeth	Belt Type					No. Teeth	Belt Type				
	XL	L	T2.5	T5	T10		XL	L	T2.5	T5	T10
10	c	e	a	c	e	34	f	-	c	f	f
11	c	e	-	c	e	35	f	-	d	f	f
12	c	f	a	c	e	36	f	-	d	f	f
13	c	f	a	c	e	37	-	-	-	f	-
14	d	f	a	e	f	38	f	-	e	f	f
15	d	f	a	e	f	39	f	-	-	-	-
16	e	f	a	e	f	40	f	-	e	f	f
17	e	f	a	e	f	41	f	-	-	-	-
18	e	f	a	e	f	42	f	-	e	f	-
19	e	f	b	e	f	43	f	-	-	-	-
20	e	f	b	f	f	44	f	-	e	f	-
21	f	f	b	f	f	45	-	-	e	f	f
22	f	f	c	f	f	46	-	-	-	f	-
23	f	f	-	f	f	48	f	-	e	f	f
24	f	f	c	f	f	50	-	-	f	f	-
25	f	-	-	f	-	56	f	-	-	-	-
26	f	-	c	f	f	60	f	-	f	f	f
27	f	f	c	f	f	65	-	-	f	-	-
28	f	-	c	f	f	70	-	-	f	-	-
29	f	-	c	f	f	72	f	-	f	f	f
30	f	f	c	f	f	80	-	-	-	f	-
32	f	-	c	f	f	90	-	-	f	f	-
33	f	-	-	-	-	100	-	-	f	f	-



Bar Size	I	L
a	50	75
b	90	120
c	125	140
d	132	140
e	140	140
f	160	160

All sizes indicated available in aluminium. XL and L sizes also available in steel.

Tel +44 121 360 0155

Fax +44 121 325 1079

Email sales@crossmorse.com

# Special Belts



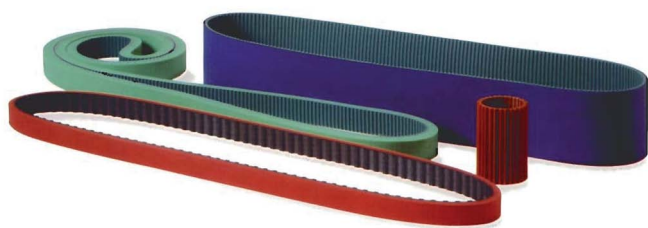
Special belts can be manufactured in a standard or coated condition to customer's specific requirements. Belts with punched holes and punched rectangular slots according to customer design for most packaging machines are also available.



## *Cleated belts*

All belts made in thermoplastic polyurethane can be fitted with cleats welded on the backside.

The cleats are welded with an high frequency vibration system, in order to obtain a perfect result without any glue.



## *Vacuum Applications*

Classical moulded belt for vacuum applications which create little noise, available with tenax, linatex or yellow PU. coating

## *Special moulded belts*

Different kinds of coating material (foamed or vulcanised polyurethane, natural or synthetic rubber, silicon) available on extruded or moulded belts.

Polyurethane and rubber moulded belts with Special Grey NEOPRENE coating



Tel +44 121 360 0155

Fax +44 121 325 1079

Email [sales@crossmorse.com](mailto:sales@crossmorse.com)