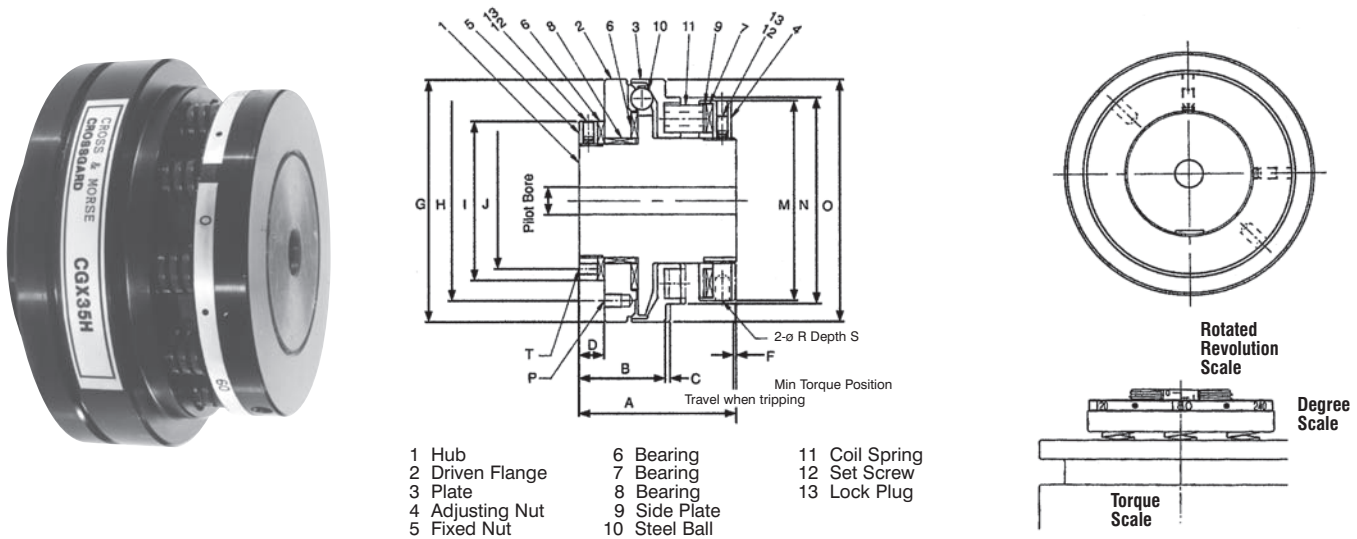


# Type CGX Crossgard Clutch



**Provides complete overload protection of drives with accurate positioning and zero backlash. Suitable for gears, cams and index table drives.**

These clutches can be supplied with pilot bore, finish bore and keyseat, or fitted with clamping elements to clamp directly to keyless shafts. The use of clamping elements ensures total elimination of backlash in the complete assembly within the operating torque range, but does require an increase to the overall length of clutch in order to accommodate. Clutch and clamping element assemblies are supplied from stock to suit specific metric shaft sizes as indicated in the table, using clamping elements types ACE81 & RCK80.



For Selection of Crossgard CGX Clutches refer to page 14, always use with proximity sensor switch, refer to page 29

Model	Setting Torque Range Nm	Max Running Speed RPM	Colour of Spring x Number	Pilot Bore mm	Max Bore mm	Shaft Clamping Element † Std. Bore Sizes (mm)	*Weight kg	Inertia kgm <sup>2</sup> (x10 <sup>2</sup> )
CGX10 L	1.7 - 6.5	1400	Yellow x 3	7	15	8, 9, 10, 11, 12	0.75	0.177
CGX10 M	5.5 - 15		Red x 3					
CGX10 H	11 - 30		Red x 6					
CGX20 L	6.5 - 24	1100	Yellow x 6	8.5	25	11, 12, 14, 15, 16, 18, 19, 20	1.67	0.535
CGX20 M	13 - 35		Red x 3					
CGX20 H	26 - 68		Red x 6					
CGX35 L	23 - 68	800	Red x 5	12	35	19, 20, 22, 24, 25, 28, 30	2.51	1.33
CGX35 M	44 - 100		Green x 5					
CGX35 H	89 - 200		Green x 10					
CGX50 L	46 - 120	600	Red x 5	18	55	24, 25, 28, 30, 32, 35, 38, 40, 42	7.03	7.32
CGX50 M	92 - 200		Green x 5					
CGX50 H	180 - 400		Green x 10					
CGX70 L	130 - 370	480	Red x 8	23	70	28, 30, 32, 35, 38, 40, 42, 45, 48, 50, 55, 60	11.4	19.5
CGX70 M	270 - 520		Green x 8					
CGX70 H	400 - 785		Green x 12					

Dimensions in mm.

\*Weight and inertia values for clutches with max. bore.

† Clamping elements protrude from end of clutch 17.5mm (CG X 10 & 20), 25.0mm (CGX 35 & 50), 31mm (CGX 70)

Models	A	B	C	D	F	G h7	H PCD	I	J PCD	M	N	O	P Screws		R	S	P Screws	
													No.	Size			No.	Size
CGX10	53	22	1.4	7.5	+0.3	62	54	42	34	56	56	61.8	4	M4x6	5	10	4	M4x7
CGX20	64	35	1.6	10	+0.7	86	74	60	50	70	73	86	6	M5x8	5	10	6	M4x7
CGX35	68	37.5	2.0	11	-0.5	107	88	70	60	88	91	107	6	M6x7	6	10	6	M5x8
CGX50	92	54.8	2.6	15	+0.3	148	130	105	-	123	129	148	6	M8x13	9	17	-	-
CGX70	98	61	3.5	15	+1.0	185	164	135	-	148	153	185	6	M10x13	10	18	-	-