

# Types KI, ASK and GFK Compact Freewheel Clutches



These three series of Freewheels are ideally suited to volume production machines, combining compact design with low price.

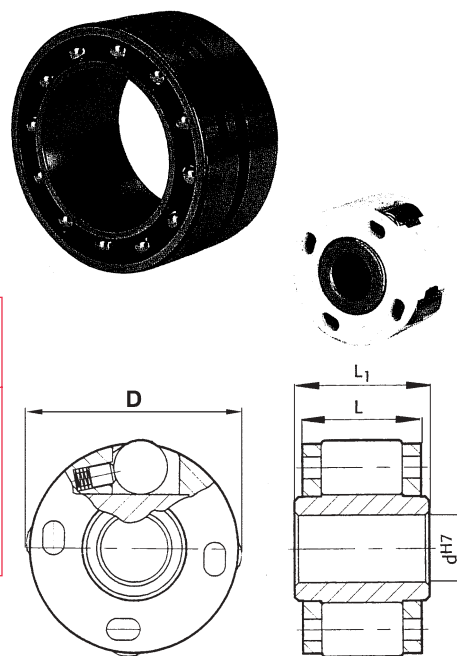
## Type KI - Miniature Roller Ramp Freewheel

The KI Series are self-contained units with inner race, springs and rollers contained in a polyamide cage suitable for temperature range -40°C to +120°C. Designed for small office Equipment and packaging machines, the clutch can be pressed onto shaft to r6 tolerance, with outer driving any steel component with H7 tolerance bore and bearing support.

Clutch Size	Bore d <sub>H7</sub> mm	Nom <sup>(1)</sup> Torque Nm	Max. Overrun Speeds rpm		Dimensions mm			Approx. Weight gms
			Inner	Outer	D <sub>H7</sub>	L <sub>1</sub>	L	
KI 164	4	0.6	8000	10000	16	10	9	8
KI 165	5	0.6	8000	10000	16	10	9	7
KI 194	4	0.7	7000	9000	19	10	9	12
KI 195	5	0.7	7000	9000	19	10	9	11
KI 196	6	0.7	7000	9000	19	10	9	10
KI 268	8*	2.3	5000	6000	26	14	13	23
KI 269	9*	2.3	5000	6000	26	14	13	21
KI 2610	10*	2.3	5000	6000	26	14	13	19

(1) Max. Torque = Nom. Torque, brief periods.

\*Sizes 268-2610 can be supplied with keyway to DIN 6885 sht. 1.

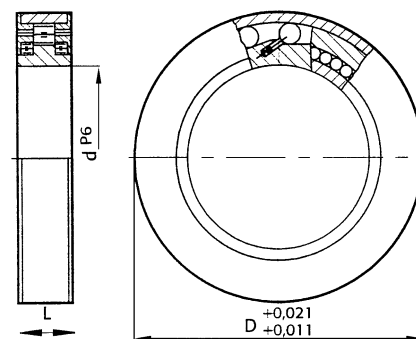


## Type ASK - Combined Roller Bearing and Roller Ramp Clutch

The ASK series are roller ramp freewheels supported by two rows of roller bearings, the complete unit being within a dust proof enclosure conforming to 60 series bearing dimensions. They are supplied ready grease lubricated. Torque transmission is by press fit with outer housing to K6 tolerance and shaft to h6 or j6. These units must not be subject to axial loading.

Clutch Size	Bore d <sub>P6</sub> mm	Brg. Size	Nom. Torque Nm <sup>(1)</sup>	Max. Overrun rpm	D mm	L mm	Bearing Capacity N		Approx. Weight kg
							dyn. C	Stat. Co	
ASK 40	40	6008	58	3500	68	15	16200	20600	0.25
ASK 50	50	6010	100	3000	80	16	19600	23500	0.34
ASK 60	60	6012	200	2500	95	18	25300	35100	0.50

(1) Max. Torque = Nom. Torque, brief periods.

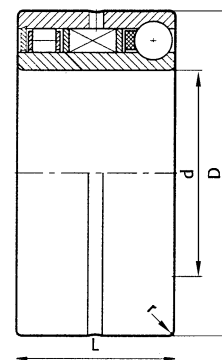


## Type GFK - Ball and Roller Bearing Sprag Clutches

The GFK clutch combines a sprag unit with a roller bearing and ball bearing into a unit which dimensionally equates to a 59 series bearing. The design provides high torque capacity and bearing strength within a compact unit.

Torque transmission is by press fit with outer housing bore to R6 tolerance and shaft to p5 tolerance.

The unit has operating temperature range of -40°C to +130°C, and is supplied ready grease lubricated. For dusty environment external sealing is required.



Clutch Size	Bore d mm	Nom. Torque Nm	Max. Overrun Speeds rpm		Equiv. Size Bearing	Bearing Capacities N				Dimensions mm			Approx. Weight kg
			inner	outer		Dynamic C		Static C		D	L	r	
						Roller	Ball	Roller	Ball				
GFK 20	20	41	5500	4000	5904	5600	4400	2900	2750	37	23	0.5	0.09
GFK 25	25	52	5300	3800	5905	6300	5300	3450	3350	42	23	0.5	0.11
GFK 30	30	62	5000	3500	5906	7700	5500	4600	3650	47	23	0.5	0.13
GFK 35	35	106	4600	3200	5907	8200	8500	5200	5700	55	27	1	0.20
GFK 40	40	148	4200	3000	5908	8650	8300	5750	5700	62	30	1	0.30
GFK 45	45	220	3800	2500	5909	9200	9650	6350	7200	68	30	1	0.34
GFK 50	50	240	3400	2200	5910	9650	10000	6950	7800	72	30	1	0.36

(1) Max. Torque = 2.5x Nom. Torque, brief periods.

Tel +44 121 3600155

Fax +44 121 325 1079

Email sales@crossmorse.com