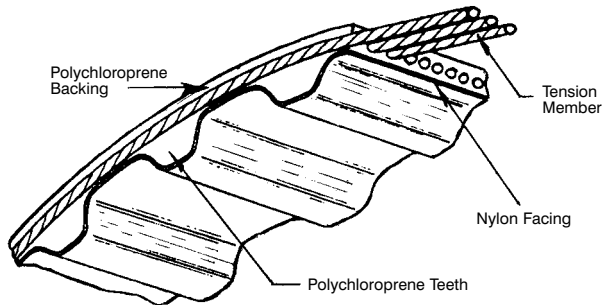


Classical Series Timing Belts



Classical Series Timing Belts are manufactured in 5 pitch sizes, XL (1/5), L (3/8"), H (1/2"), XH (7/8") and XXH (1 1/4"). Standard stock lengths and widths are shown below, the XH and XXH Series being available to order. Although in many designs Classical Belts have been replaced by the new Parabolic Belts they are still preferred on some drives due to lower cost, larger selection stock belts and pulleys and their suitability for low torque high speed applications.



Timing Belt Construction

The classical timing belt consists of four components.

Cable Tension Member: A continuous helically wound glass fibre cable is the load carrying element at the heart of the belt. This tension member provides the belt with enormous tensile strength with a high level of flexibility.

Polychloroprene Backing: A thin, strong, wear resistant polychloroprene rubber sleeve is bonded to the tension cable to provide a flexible protection.

Polychloroprene Teeth: Moulded integral with the polychloroprene backing, made of moderately hard, shear resistant rubber compound, the teeth are accurately formed and precisely spaced pulley engagement.

Nylon Facing: A tough, wear resistant nylon duck, with low coefficient of friction, protects the wearing surface of the teeth in the same manner as case hardening protects the surface of steel.

Special Construction Belts

Belts for special applications can be produced to order in minimum batch sizes.

Anti-Static Belts: Belts conforming to BS 2050 Standard can be provided on all standard belt sizes. These belts are for applications where static discharges must be avoided, such as chemical plants, mines and oil refineries.

High Temperature Belts: For applications in confined areas with elevated temperatures, these belts can operate at up to 120°C.

Oil Resistance Belts: For areas where belts could be subject to frequent contact with lubricating oils.

Belts with a combination of these features can also be offered.

Ground Back Belts: All belts supplied by Cross and Morse have ground backs and uniform tension member to ensure smooth running. For very sensitive drives the belt thickness tolerance can be tightened from the standard $\pm 0.6\text{mm}$ to $\pm 0.25\text{mm}$ (Class 2) or even $\pm 0.15\text{mm}$ (Class 1). These belts provide improved accuracy of drive on positioning applications.

Other Pitch and Widths of Belts: Belts can also be provided in 2mm pitch MXL, 7/8 inch pitch XH and 1 1/4 inch pitch XXH, for replacement purposes. Widths up to mould turn (approx 400mm) can be supplied.

Standard Stock Timing Belt Sizes

XL Series - 1/5" Pitch

Belt Length Code	Pitch Length mm	No. Teeth N	1/4" Wide Belt		3/8" Wide Belt	
			Cat. No	Wt.gms	Cat. No	Wt.gms
54XL	137.16	27	54XL 025	2.0	54XL 037	2.9
60XL	152.40	30	60XL 025	2.3	60XL 037	3.3
70XL	177.80	35	70XL 025	2.6	70XL 037	3.8
80XL	203.20	40	80XL 025	2.9	80XL 037	4.4
90XL	228.60	45	90XL 025	3.3	90XL 037	4.9
98XL	248.92	49	98XL 025	3.6	98XL 037	5.3
100XL	254.00	50	100XL 025	3.7	100XL 037	5.5
102XL	259.08	51	102XL 025	3.7	102XL 037	5.6
106XL	269.24	53	106XL 025	3.9	106XL 037	5.8
110XL	279.40	55	110XL 025	4.0	110XL 037	6.0
120XL	304.80	60	120XL 025	4.4	120XL 037	6.5
130XL	330.20	65	130XL 025	4.8	130XL 037	7.0
140XL	355.60	70	140XL 025	5.1	140XL 037	7.6
150XL	381.00	75	150XL 025	5.5	150XL 037	8.2
156XL	396.24	78	156XL 025	5.7	156XL 037	8.5
160XL	406.40	80	160XL 025	5.9	160XL 037	8.7
170XL	431.80	85	170XL 025	6.2	170XL 037	9.3
180XL	457.20	90	180XL 025	6.6	180XL 037	9.8
182XL	462.28	91	182XL 025	6.7	182XL 037	10.0
190XL	482.60	95	190XL 025	7.0	190XL 037	10.4
198XL	502.92	99	198XL 025	7.3	198XL 037	10.9
200XL	508.00	100	200XL 025	7.3	200XL 037	11.0
202XL	513.08	101	202XL 025	7.4	202XL 037	11.1
210XL	533.40	105	210XL 025	7.7	210XL 037	11.5
212XL	538.48	106	212XL 025	7.8	212XL 037	11.7
214XL	543.56	107	214XL 025	7.9	214XL 037	11.8

Belt Length Code	Pitch Length mm	No. Teeth N	1/4" Wide Belt		3/8" Wide Belt	
			Cat. No	Wt.gms	Cat. No	Wt.gms
220XL	558.80	110	220XL 025	8.1	220XL 037	12.1
228XL	579.12	114	228XL 025	8.4	228XL 037	12.5
230XL	584.20	115	230XL 025	8.4	230XL 037	12.6
234XL	594.36	117	234XL 025	8.6	234XL 037	12.9
240XL	609.60	120	240XL 025	8.8	240XL 037	13.2
250XL	635.00	125	250XL 025	9.2	250XL 037	13.7
260XL	660.40	130	260XL 025	9.5	260XL 037	14.3
270XL	685.80	135	270XL 025	9.9	270XL 037	14.8
276XL	701.04	138	276XL 025	10.1	276XL 037	15.2
290XL	736.60	145	290XL 025	10.6	290XL 037	15.9
310XL	787.40	155	310XL 025	11.4	310XL 037	17.1
316XL	802.64	158	316XL 025	11.6	316XL 037	17.4
320XL	812.80	160	320XL 025	11.7	320XL 037	17.6
330XL	838.20	165	330XL 025	12.1	330XL 037	18.1
344XL	873.76	172	344XL 025	12.6	344XL 037	18.9
352XL	894.08	176	352XL 025	12.9	352XL 037	19.4
364XL	924.56	182	364XL 025	13.3	364XL 037	20.0
380XL	965.20	190	380XL 025	13.9	380XL 037	20.9
384XL	975.36	192	384XL 025	14.1	384XL 037	21.1
390XL	990.60	195	390XL 025	14.3	390XL 037	21.4
392XL	995.68	196	392XL 025	14.4	392XL 037	21.6
434XL	1102.36	217	434XL 025	15.9	434XL 037	23.9
530XL	1346.20	265	530XL 025	19.4	530XL 037	29.1
600XL	1524.00	300	600XL 025	22.0	600XL 037	33.0
710XL	1803.40	355	710XL 025	26.0	710XL 037	39.1

The belts are standard construction stock length and width sizes. Other pitches, widths, and special constructions can be supplied to order. Special Constructions include: Ground-back Belts, Static Conductive, Oil Resistant, High Temperature Resistant and Double Sided Construction. For further details contact Cross & Morse Technical Department.

Tel +44 121 360 0155

Fax +44 121 325 1079

Email sales@crossmorse.com

Classical Series Timing Belts



Standard Stock Timing Belt Sizes

L Series - 3/8" Pitch

Belt Length Code	Pitch Length mm	No. Teeth N	1/2" Wide Belt		3/4" Wide Belt		1" Wide Belt	
			Cat. No.	Wt. gms.	Cat. No.	Wt. gms.	Cat. No.	Wt. gms.
124L	314.33	33	124 L050	.015	124 L075	.023	124L 100	.031
135L	342.90	36	135 L050	.017	135 L075	.023	135L 100	.034
150L	381.00	40	150 L050	.019	150 L075	.026	150L 100	.038
173L	438.15	46	173 L050	.020	173 L075	.030	173L 100	.039
187L	476.25	50	187 L050	.022	187 L075	.034	187L 100	.044
202L	514.35	54	202 L050	.023	202 L075	.035	202L 100	.046
210L	533.40	56	210 L050	.025	210 L075	.038	210L 100	.051
225L	571.50	60	225 L050	.026	225 L075	.039	225L 100	.052
240L	609.60	64	240 L050	.028	240 L075	.042	240L 100	.056
255L	647.70	68	255 L050	.030	255 L075	.045	255L 100	.060
270L	685.80	72	270 L050	.032	270 L075	.047	270L 100	.063
285L	723.90	76	285 L050	.034	285 L075	.049	285L 100	.068
300L	762.00	80	300 L050	.035	300 L075	.053	300L 100	.070
322L	819.15	86	322 L050	.038	322 L075	.056	322L 100	.075
345L	876.30	92	345 L050	.040	345 L075	.060	345L 100	.081
367L	932.18	98	367 L050	.043	367 L075	.063	367L 100	.085
390L	990.60	104	390 L050	.046	390 L075	.068	390L 100	.091
405L	1028.70	108	405 L050	.047	405 L075	.071	405L 100	.095
412L	1047.75	110	412 L050	.048	412 L075	.072	412L 100	.096
420L	1066.80	112	420 L050	.049	420 L075	.074	420L 100	.098
450L	1143.00	120	450 L050	.054	450 L075	.078	450L 100	.105
480L	1219.20	128	480 L050	.058	480 L075	.083	480L 100	.116
510L	1295.40	136	510 L050	.062	510 L075	.089	510L 100	.120
540L	1371.60	144	540 L050	.065	540 L075	.093	540L 100	.130
600L	1524.00	160	600 L050	.070	600 L075	.105	600L 100	.139
728L	1847.85	194	728 L050	.085	728 L075	.128	728L 100	.170
817L	2076.45	218	817 L050	.095	817 L075	.142	817L 100	.190

H Series - 1/2" Pitch

Belt Length Code	Pitch Length mm	No. Teeth N	1/2" Wide Belt		1" Wide Belt		1 1/2" Wide Belt		2" Wide Belt		3" Wide Belt	
			Cat. No.	Wt. gms.	Cat. No.	Wt. gms.	Cat. No.	Wt. gms.	Cat. No.	Wt. gms.	Cat. No.	Wt. gms.
240H	609.60	48	240H 075	.052	240H 100	.069	240H 150	.103	240H 200	.137	240H 300	.206
270H	685.80	54	270H 075	.058	270H 100	.077	270H 150	.116	270H 200	.154	270H 300	.231
300H	762.00	60	300H 075	.065	300H 100	.088	300H 150	.131	300H 200	.175	300H 300	.263
330H	838.20	66	330H 075	.071	330H 100	.096	330H 150	.142	330H 200	.193	330H 300	.289
360H	914.40	72	360H 075	.078	360H 100	.104	360H 150	.155	360H 200	.207	360H 300	.311
390H	990.60	78	390H 075	.084	390H 100	.114	390H 150	.167	390H 200	.228	390H 300	.341
420H	1066.80	84	420H 075	.091	420H 100	.120	420H 150	.180	420H 200	.240	420H 300	.360
450H	1143.00	90	450H 075	.097	450H 100	.129	450H 150	.193	450H 200	.258	450H 300	.386
480H	1219.20	96	480H 075	.104	480H 100	.138	480H 150	.206	480H 200	.275	480H 300	.412
510H	1295.40	102	510H 075	.110	510H 100	.146	510H 150	.219	510H 200	.292	510H 300	.438
540H	1371.60	108	540H 075	.116	540H 100	.155	540H 150	.232	540H 200	.309	540H 300	.464
570H	1447.80	114	570H 075	.122	570H 100	.163	570H 150	.245	570H 200	.326	570H 300	.489
600H	1524.00	120	600H 075	.129	600H 100	.171	600H 150	.258	600H 200	.343	600H 300	.515
630H	1600.20	126	630H 075	.135	630H 100	.180	630H 150	.270	630H 200	.360	630H 300	.540
660H	1676.40	132	660H 075	.142	660H 100	.189	660H 150	.284	660H 200	.378	660H 300	.567
700H	1778.00	140	700H 075	.151	700H 100	.200	700H 150	.301	700H 200	.400	700H 300	.601
725H	1841.50	145	725H 075	.156	725H 100	.208	725H 150	.311	725H 200	.415	725H 300	.623
750H	1905.00	150	750H 075	.161	750H 100	.215	750H 150	.322	750H 200	.430	750H 300	.644
800H	2032.00	160	800H 075	.172	800H 100	.229	800H 150	.343	800H 200	.458	800H 300	.687
850H	2159.00	170	850H 075	.183	850H 100	.243	850H 150	.365	850H 200	.487	850H 300	.730
900H	2286.00	180	900H 075	.194	900H 100	.258	900H 150	.386	900H 200	.515	900H 300	.773
1000H	2540.00	200	1000H 075	.215	1000H 100	.286	1000H 150	.429	1000H 200	.572	1000H 300	.859
1100H	2794.00	220	1100H 075	.237	1100H 100	.315	1100H 150	.472	1100H 200	.630	1100H 300	.944
1120H	2844.80	224	1120H 075	.241	1120H 100	.321	1120H 150	.481	1120H 200	.641	1120H 300	.961
1140H	2895.60	228	1140H 075	.246	1140H 100	.326	1140H 150	.489	1140H 200	.653	1140H 300	.978
1150H	2921.00	230	1150H 075	.248	1150H 100	.329	1150H 150	.493	1150H 200	.659	1150H 300	.987
1250H	3175.00	250	1250H 075	.269	1250H 100	.358	1250H 150	.537	1250H 200	.716	1250H 300	1.073
1400H	3556.00	280	1400H 075	.301	1400H 100	.401	1400H 150	.601	1400H 200	.801	1400H 300	1.201
1700H	4318.00	340	1700H 075	.366	1700H 100	.487	1700H 150	.730	1700H 200	.973	1700H 300	1.460

The belts are standard construction stock length and width sizes. Other pitches, widths, and special constructions can be supplied to order. Special Constructions include: Ground-back Belts, Static Conductive, Oil Resistant, High Temperature Resistant. For further details contact Cross & Morse Technical Department. Standard Belts to XH and XXH formats can be supplied on short delivery time.

Open Ended Classical Series Belts

Open ended classical belts are available all sizes of classical belts for application on reciprocating drives, etc. All belts operate on standard pulleys and can be secured by clamping plates (page 45).

Cat. No	Belt Type	Pitch mm	Width mm	No. Teeth/Metre	Wt/Metre gms	Std. Length
XL025E	XL025	5.08	6.4	196.8	14.4	110m
XL031E	XL031	5.08	7.9	196.8	18.0	90m
XL037E	XL037	5.08	9.5	196.8	21.6	70m
L050E	L050	9.53	12.7	105.0	45.7	90m
L075E	L075	9.53	19.1	105.0	68.4	70m
L100E	L100	9.53	25.4	105.0	91.5	50m
H050E	H050	12.70	12.7	78.7	56.5	70m
H075E	H075	12.70	19.1	78.7	84.8	70m
H100E	H100	12.70	25.4	78.7	113.0	70m

Classical Series Timing Belts



CROSS-MORSE

Double Sided Classical Belts

Construction of these belts same as standard Classical Belts, but with teeth on both sides of the belt. Both faces of belt have nylon facing for wear resistance. These belts enable driving of pulleys by both sides of belt.

XL Series Double Sided Belts - 1/5" Pitch

Belt Length Code	Pitch Length mm	No. Teeth N	1/4" Wide Belt		3/8" Wide Belt	
			Cat. No.	Wt. gms.	Cat. No.	Wt. gms.
120XL	304.80	60	120XL025DD	4.4	120XL025DD	6.5
130XL	330.20	65	130XL025DD	4.8	130XL037DD	7.0
140XL	355.60	70	140XL025DD	5.1	140XL037DD	7.6
150XL	381.00	75	150XL025DD	5.5	150XL037DD	8.2
156XL	396.24	78	156XL025DD	5.7	156XL037DD	8.5
160XL	406.40	80	160XL025DD	5.9	160XL037DD	8.7
170XL	431.80	85	170XL025DD	6.2	170XL037DD	9.3
180XL	457.20	90	180XL025DD	6.6	180XL037DD	9.8
182XL	462.28	91	182XL025DD	6.7	182XL037DD	10.0
190XL	482.60	95	190XL025DD	7.0	190XL037DD	10.4
198XL	502.92	99	198XL025DD	7.3	198XL037DD	10.9
200XL	508.00	100	200XL025DD	7.3	200XL037DD	11.0
202XL	513.08	101	202XL025DD	7.4	202XL037DD	11.1
210XL	533.40	105	210XL025DD	7.7	210XL037DD	11.5
212XL	538.48	106	212XL025DD	7.8	212XL037DD	11.7
214XL	543.56	107	214XL025DD	7.9	214XL037DD	11.8
220XL	558.80	110	220XL025DD	8.1	220XL037DD	12.1
228XL	579.12	114	228XL025DD	8.4	228XL037DD	12.5
230XL	584.20	115	230XL025DD	8.4	230XL037DD	12.6
234XL	594.36	117	234XL025DD	8.6	234XL037DD	12.9

Belt Length Code	Pitch Length mm	No. Teeth N	1/4" Wide Belt		3/8" Wide Belt	
			Cat. No.	Wt. gms.	Cat. No.	Wt. gms.
240XL	609.60	120	240XL025DD	8.8	240XL037DD	13.2
250XL	635.00	125	250XL025DD	9.2	250XL037DD	13.7
260XL	660.40	130	260XL025DD	9.5	260XL037DD	14.3
270XL	685.80	135	270XL025DD	9.9	270XL037DD	14.8
276XL	701.04	138	276XL025DD	10.1	276XL037DD	15.2
290XL	736.60	145	290XL025DD	10.6	290XL037DD	15.9
310XL	787.40	155	310XL025DD	11.4	310XL037DD	17.1
316XL	802.64	158	316XL025DD	11.6	316XL037DD	17.4
320XL	812.80	160	320XL025DD	11.7	320XL037DD	17.6
330XL	838.20	165	330XL025DD	12.1	330XL037DD	18.1
344XL	873.76	172	344XL025DD	12.6	344XL037DD	18.9
352XL	894.08	176	352XL025DD	12.9	352XL037DD	19.4
364XL	924.26	182	364XL025DD	13.3	364XL037DD	20.0
380XL	965.20	190	380XL025DD	13.9	380XL037DD	20.9
384XL	975.36	192	384XL025DD	14.1	384XL037DD	21.1
390XL	990.60	195	390XL025DD	14.3	390XL037DD	21.4
392XL	995.68	196	392XL025DD	14.4	392XL037DD	21.6
434XL	1102.36	217	434XL025DD	15.9	434XL037DD	23.9
530XL	1346.20	265	530XL025DD	19.4	530XL037DD	29.1
600XL	1524.00	300	600XL025DD	22.0	600XL037DD	33.0

L Series Double Sided Belts - 3/8" Pitch

Belt Length Code	Pitch Length mm	No. Teeth N	1/2" Wide Belt		3/4" Wide Belt		1" Wide Belt	
			Cat. No.	Wt. gms.	Cat. No.	Wt. gms.	Cat. No.	Wt. gms.
124L	314.33	33	124L050DD	.015	124L075DD	.022	124L100DD	.031
135L	342.90	36	135L050DD	.017	135L075DD	.024	135L100DD	.034
150L	381.00	40	150L050DD	.019	150L075DD	.026	150L100DD	.038
173L	438.15	46	173L050DD	.020	173L075DD	.030	173L100DD	.039
187L	476.25	50	187L050DD	.022	187L075DD	.034	187L100DD	.044
202L	514.35	54	202L050DD	.023	202L075DD	.035	202L100DD	.046
210L	533.40	56	210L050DD	.025	210L075DD	.038	210L100DD	.051
225L	571.50	60	225L050DD	.026	225L075DD	.039	225L100DD	.052
240L	609.60	64	240L050DD	.028	240L075DD	.042	240L100DD	.056
255L	647.70	68	255L050DD	.030	255L075DD	.045	255L100DD	.060
270L	685.80	72	270L050DD	.032	270L075DD	.047	270L100DD	.063
285L	723.90	76	285L050DD	.034	285L075DD	.049	285L100DD	.068
300L	762.00	80	300L050DD	.035	300L075DD	.053	300L100DD	.070
322L	819.15	86	322L050DD	.038	322L075DD	.056	322L100DD	.075
345L	876.30	92	345L050DD	.040	345L075DD	.060	345L100DD	.081
367L	932.18	98	367L050DD	.043	367L075DD	.063	367L100DD	.085
390L	990.60	104	390L050DD	.046	390L075DD	.068	390L100DD	.091
405L	1028.70	108	405L050DD	.047	405L075DD	.071	405L100DD	.095
412L	1047.75	110	412L050DD	.048	412L075DD	.072	412L100DD	.096
420L	1066.80	112	420L050DD	.049	420L075DD	.074	420L100DD	.098
450L	1143.00	120	450L050DD	.054	450L075DD	.078	450L100DD	.105
480L	1219.20	128	480L050DD	.058	480L075DD	.083	480L100DD	.116
510L	1295.40	136	510L050DD	.062	510L075DD	.089	510L100DD	.120
540L	1371.60	144	540L050DD	.065	540L075DD	.093	540L100DD	.130
600L	1524.00	160	600L050DD	.070	600L075DD	.105	600L100DD	.139
728L	1847.85	194	728L050DD	.085	728L075DD	.128	728L100DD	.170
817L	2076.45	218	817L050DD	.095	817L075DD	.142	817L100DD	.190

H Series Double Sided Belts - 1/2" Pitch

Belt Length Code	Pitch Length mm	No. Teeth N	1/2" Wide Belt		1" Wide Belt		1 1/2" Wide Belt		2" Wide Belt		3" Wide Belt	
			Cat. No.	Wt. gms.	Cat. No.	Wt. gms.	Cat. No.	Wt. gms.	Cat. No.	Wt. gms.	Cat. No.	Wt. gms.
240H	609.60	48	240H075DD	.052	240H100DD	.069	240H150DD	.103	240H200DD	.137	240H300DD	.206
270H	685.80	54	270H075DD	.058	270H100DD	.077	270H150DD	.116	270H200DD	.154	270H300DD	.231
300H	762.00	60	300H075DD	.065	300H100DD	.088	300H150DD	.131	300H200DD	.175	300H300DD	.263
330H	838.20	66	330H075DD	.071	330H100DD	.096	330H150DD	.142	330H200DD	.193	330H300DD	.289
360H	914.40	72	360H075DD	.078	360H100DD	.104	360H150DD	.155	360H200DD	.207	360H300DD	.311
390H	990.60	78	390H075DD	.084	390H100DD	.114	390H150DD	.167	390H200DD	.228	390H300DD	.341
420H	1066.80	84	420H075DD	.091	420H100DD	.120	420H150DD	.180	420H200DD	.240	420H300DD	.360
450H	1143.00	90	450H075DD	.097	450H100DD	.129	450H150DD	.193	450H200DD	.258	450H300DD	.386
480H	1219.20	96	480H075DD	.104	480H100DD	.138	480H150DD	.206	480H200DD	.275	480H300DD	.412
510H	1295.40	102	510H075DD	.110	510H100DD	.146	510H150DD	.219	510H200DD	.292	510H300DD	.438
540H	1371.60	108	540H075DD	.116	540H100DD	.155	540H150DD	.232	540H200DD	.309	540H300DD	.464
570H	1447.80	114	570H075DD	.122	570H100DD	.163	570H150DD	.245	570H200DD	.326	570H300DD	.489
600H	1524.00	120	600H075DD	.129	600H100DD	.171	600H150DD	.258	600H200DD	.343	600H300DD	.515
630H	1600.20	126	630H075DD	.135	630H100DD	.180	630H150DD	.270	630H200DD	.360	630H300DD	.540
660H	1676.40	132	660H075DD	.142	660H100DD	.189	660H150DD	.284	660H200DD	.378	660H300DD	.567
700H	1778.00	140	700H075DD	.151	700H100DD	.200	700H150DD	.301	700H200DD	.400	700H300DD	.601
725H	1841.50	145	725H075DD	.156	725H100DD	.208	725H150DD	.311	725H200DD	.415	725H300DD	.623
750H	1905.00	150	750H075DD	.161	750H100DD	.215	750H150DD	.322	750H200DD	.430	750H300DD	.644
800H	2032.00	160	800H075DD	.172	800H100DD	.229	800H150DD	.343	800H200DD	.458	800H300DD	.687
850H	2159.00	170	850H075DD	.183	850H100DD	.243	850H150DD	.365	850H200DD	.487	850H300DD	.730
900H	2286.00	180	900H075DD	.194	900H100DD	.258	900H150DD	.386	900H200DD	.515	900H300DD	.773
1000H	2540.00	200	1000H075DD	.215	1000H100DD	.286	1000H150DD	.429	1000H200DD	.572	1000H300DD	.859
1100H	2794.00	220	1100H075DD	.237	1100H100DD	.315	1100H150DD	.472	1100H200DD	.630	1100H300DD	.944
1120H	2844.80	224	1120H075DD	.241	1120H100DD	.321	1120H150DD	.481	1120H200DD	.641	1120H300DD	.961
1140H	2895.60	228	1140H075DD	.246	1140H100DD	.326	1140H150DD	.489	1140H200DD	.653	1140H300DD	.978
1150H	2921.00	230	1150H075DD	.248	1150H100DD	.329	1150H150DD	.493	1150H200DD	.659	1150H300DD	.987
1250H	3175.00	250	1250H075DD	.269	1250H100DD	.358	1250H150DD	.537	1250H200DD	.716	1250H300DD	1.073
1400H	3556.00	280	1400H075DD	.301	1400H100DD	.401	1400H150DD	.601	1400H200DD	.801	1400H300DD	1.201
1700H	4318.00	340	1700H075DD	.366	1700H100DD	.487	1700H150DD	.730	1700H200DD	.973	1700H300DD	1.460

Tel + 44 121 360 0155

Fax + 44 121 325 1079

Email sales@crossmorse.com

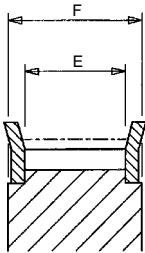
Classical Timing Belt Pulleys



Classical Timing Belt Pulleys have evenly spaced grooves cut in their periphery, to make correct, positive engagement with the mating teeth of the belt. Cross & Morse pulleys are manufactured with involute groove form to enable the teeth to enter and leave the pulley with negligible friction and minimum backlash.

Pulleys are available in a number of stock widths and large selection of numbers of teeth to provide maximum versatility in drive selection. Pulleys for 3/8" pitch 'L', and 1/2" pitch 'H', drives are available with pilot bore for reworking to customers requirements or with taper bush for the complete off the shelf drive. All pulleys are precision manufactured to close tolerances to ensure concentric running, and it is important when reworking stock pulleys to accurately locate on the outside diameter to maintain concentricity.

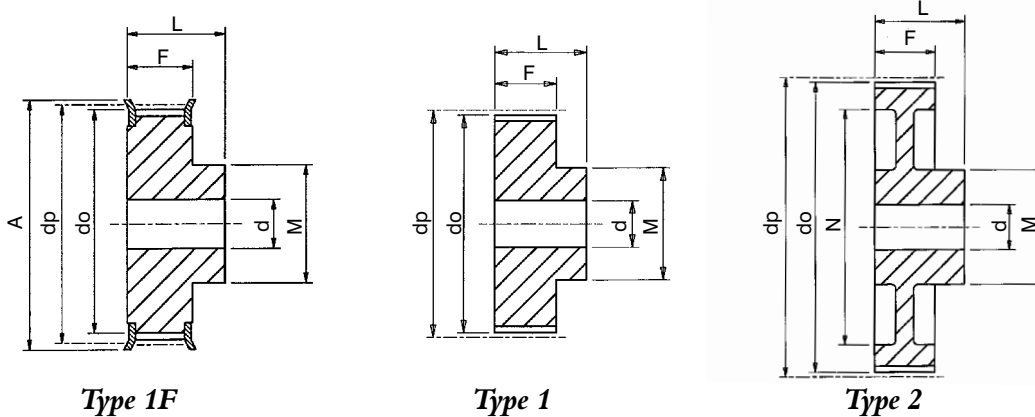
Pulleys of non-standard widths or numbers of teeth can be supplied to order, or alternately teeth can be cut on customers blanks. All pulleys are manufactured in good quality steel except for larger pulleys where cast iron is used (1/5" pitch 'XL' are also available in aluminium. Generally pulleys up to 48 teeth are supplied with two flanges to retain the timing belt. These flanges are accurately machined, pressed onto the pulley bodies and retained by spin rivetting. Dimensions over and between flanges for standard pulleys are indicated below. The dimension over the flanges is generally the same as recommended width of tooth for unflanged pulleys.



Belt Size	(1/5") XL				(1/2") H			
Belt Width Ref.	XL037	L050	L075	L100	H100	H150	H200	H300
Belt Width	3/8"	1/2"	3/4"	1"	1"	1 1/2"	2"	3"
E	10.7	14.3	20.8	27.0	27.0	40.0	53.0	79.0
F min.	14.3	19.0	25.5	32.0	32.0	45.0	58.0	84.0

Standard Pulleys for XL (1/5" pitch) Belts

Pulley Types available in both steel and aluminium. For steel add 'C' to part number, for aluminium add 'L'.



Catalogue No.	No. Teeth Z	Pulley Type	Pitch Circle Dia. dp	Min. Bore d	Max. Bore d	Outside Diameter do	Flange Diameter A	Pulley Width F	Bore Length L	Hub Diameter M	Rim Diameter N	Approx Weight kg
1/5" Pitch Pulleys for 3/8" Wide Belts. Ref. XL037												
10XL037	10	1F	16.17	4.0	6	15.7	23	14.3	20.0	9.5	-	0.02
11XL037	11	1F	17.79	4.0	6	17.3	23	14.3	20.0	9.5	-	0.02
12XL037	12	1F	19.40	4.0	7	18.9	25	14.3	20.0	10.0	-	0.03
13XL037	13	1F	21.02	4.0	7	20.5	28	14.3	20.0	10.0	-	0.04
14XL037	14	1F	22.64	4.0	10	22.1	28	14.3	20.0	15.0	-	0.05
15XL037	15	1F	24.26	6.0	10	23.8	28	14.3	20.0	15.0	-	0.05
16XL037	16	1F	25.87	6.0	10	25.4	32	14.3	20.0	16.0	-	0.06
17XL037	17	1F	27.49	6.0	13	27.0	35	14.3	20.0	20.0	-	0.07
18XL037	18	1F	29.11	6.0	13	28.6	35	14.3	20.0	20.0	-	0.08
19XL037	19	1F	30.72	6.0	13	30.2	38	14.3	22.0	20.0	-	0.09
20XL037	20	1F	32.34	6.0	15	31.8	38	14.3	22.0	23.5	-	0.11
21XL037	21	1F	33.96	6.0	15	33.5	38	14.3	22.0	23.5	-	0.12
22XL037	22	1F	35.57	6.0	16	35.1	41	14.3	22.0	25.0	-	0.13
24XL037	24	1F	38.81	6.0	20	38.3	44	14.3	22.0	30.0	-	0.15
26XL037	26	1F	42.04	8.0	20	41.5	48	14.3	22.0	30.0	-	0.19
27XL037	27	1F	43.66	8.0	20	43.2	48	14.3	22.0	30.0	-	0.20
28XL037	28	1F	45.28	8.0	22	44.8	51	14.3	22.0	34.0	-	0.22
30XL037	30	1F	48.51	8.0	25	48.0	54	14.3	22.0	38.0	-	0.24
32XL037	32	1F	51.74	8.0	25	51.2	57	14.3	25.0	38.0	-	0.12
34XL037	34	1	54.98	8.0	29	54.5	-	14.3	25.0	45.0	-	0.12
35XL037	35	1	56.60	8.0	29	56.1	-	14.3	25.0	45.0	-	0.13
36XL037	36	1	58.21	8.0	29	57.7	-	14.3	25.0	45.0	-	0.14
38XL037	38	1	61.45	8.0	29	61.0	-	14.3	25.0	45.0	-	0.16
40XL037	40	1	64.68	8.0	29	64.2	-	14.3	25.0	45.0	-	0.17
42XL037	42	1	67.91	8.0	29	67.4	-	14.3	25.0	45.0	-	0.18
44XL037	44	1	71.15	8.0	29	70.6	-	14.3	25.0	45.0	-	0.19
48XL037	48	2	77.62	10.0	29	77.1	-	14.3	25.0	45.0	61	0.21
60XL037	60	2	97.02	10.0	29	96.5	-	14.3	25.0	45.0	80	0.25
72XL037	72	2	116.43	10.0	29	115.9	-	14.3	25.0	45.0	100	0.30

All dimensions in mm.

Plain Bore Pulleys for 'L' Series Timing Belts

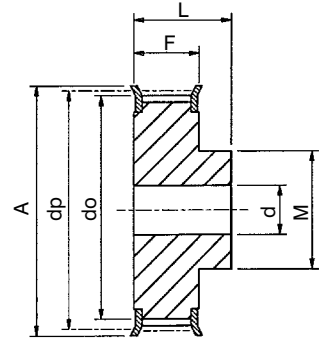


Catalogue No.	No. Teeth Z	Pulley Type	Pitch Circle Diameter dp	Min. Bore d	Max Bore d	Outside Diameter do	Flange Diameter A	Pulley Width F	Bore Length L	Hub Diameter M	Rim Diameter N	Approx. Weight kg
3/8" Pitch Pulleys for 1/2" wide Belts. Ref. L050												
P10L050	10	1F	30.32	8	13	29.6	37	19	28	20	-	0.12
P12L050	12	1F	36.38	8	15	35.6	43	19	30	24	-	0.16
P13L050	13	1F	39.41	8	19	38.7	44	19	30	28	-	0.19
P14L050	14	1F	42.45	8	19	41.7	48	19	30	28	-	0.22
P15L050	15	1F	45.48	8	23	44.7	51	19	30	34	-	0.29
P16L050	16	1F	48.51	8	24	47.8	54	19	32	36	-	0.34
P17L050	17	1F	51.54	10	24	50.8	57	19	32	36	-	0.38
P18L050	18	1F	54.57	10	27	53.8	60	19	32	40	-	0.42
P19L050	19	1F	57.61	10	27	56.8	64	19	32	40	-	0.46
P20L050	20	1F	60.64	10	27	59.9	67	19	32	40	-	0.50
P21L050	21	1F	63.67	10	30	62.9	70	19	32	45	-	0.57
P22L050	22	1F	66.70	10	30	65.9	75	19	32	45	-	0.61
P23L050	23	1F	69.73	10	36	69.0	79	19	32	55	-	0.71
P24L050	24	1F	72.77	10	36	72.0	79	19	32	58	-	0.81
P25L050	25	1F	75.80	10	38	75.0	83	19	32	58	-	0.85
P26L050	26	1F	78.83	11	38	78.1	87	19	32	58	-	0.91
P27L050	27	1F	81.86	11	38	81.1	87	19	32	58	-	0.97
P28L050	28	1F	84.89	11	38	84.1	91	19	32	70	-	1.03
P30L050	30	1F	90.96	11	46	90.2	97	19	32	70	-	1.07
P32L050	32	1F	97.02	11	46	96.3	102	19	32	70	-	1.23
P36L050	36	1F	109.15	11	46	108.4	115	19	32	70	-	1.50
P40L050	40	2F	121.28	11	46	120.5	128	19	32	70	100	1.77
P44L050	44	2F	133.40	11	46	132.6	142	19	32	70	112	2.20
P48L050	48	2F	145.53	11	46	144.8	150	19	32	70	124	2.68
P60L050	60	2	181.91	14	45	181.2	-	19	42	75	160	3.10
P72L050	72	2	218.30	14	45	217.5	-	19	42	75	197	4.86
P84L050	84	2	254.68	14	45	253.9	-	19	42	75	233	5.00
P96L050	96	2	291.06	14	45	290.3	-	19	42	75	269	6.00
3/8" Pitch Pulleys for 3/4" wide Belts. Ref. L075												
P10L075	10	1F	30.32	8	13	29.6	37	25	38	20	-	0.18
P12L075	12	1F	36.38	8	15	35.6	43	25	38	24	-	0.22
P13L075	13	1F	39.41	8	19	38.7	44	25	38	28	-	0.25
P14L075	14	1F	42.45	11	19	41.7	48	25	38	28	-	0.27
P15L075	15	1F	45.48	11	23	44.7	51	25	38	34	-	0.34
P16L075	16	1F	48.51	11	24	47.8	54	25	38	36	-	0.43
P17L075	17	1F	51.54	11	27	50.8	57	25	38	36	-	0.47
P18L075	18	1F	54.57	11	27	53.8	60	25	38	40	-	0.51
P19L075	19	1F	57.61	11	27	56.8	64	25	38	40	-	0.55
P20L075	20	1F	60.64	11	30	59.9	67	25	38	40	-	0.59
P21L075	21	1F	63.67	11	30	62.9	70	25	38	45	-	0.64
P22L075	22	1F	66.70	11	30	65.9	75	25	38	45	-	0.77
P23L075	23	1F	69.73	11	36	69.0	79	25	38	55	-	0.85
P24L075	24	1F	72.77	11	36	72.0	79	25	38	55	-	0.97
P25L075	25	1F	75.80	11	38	75.0	83	25	38	58	-	1.02
P26L075	26	1F	78.83	11	38	78.1	87	25	38	58	-	1.08
P27L075	27	1F	81.86	11	38	81.1	87	25	38	58	-	1.18
P28L075	28	1F	84.89	11	38	84.1	91	25	38	58	-	1.20
P30L075	30	1F	90.96	11	46	90.2	97	25	38	70	-	1.37
P32L075	32	1F	97.02	11	46	96.3	102	25	38	70	-	1.54
P36L075	36	1F	109.15	11	46	108.4	115	25	38	70	-	1.89
P40L075	40	2F	121.28	11	46	120.5	128	25	38	70	100	2.35
P44L075	44	2F	133.40	11	46	132.6	142	25	38	70	112	2.75
P48L075	48	2F	145.53	11	46	144.8	150	25	38	70	124	3.19
P60L075	60	2	181.91	14	45	181.2	-	25	45	75	160	3.44
P72L075	72	2	218.30	14	45	217.5	-	25	45	75	197	4.58
P84L075	84	2	254.68	14	45	253.9	-	25	45	75	233	5.60
P96L075	96	2	291.06	14	45	290.3	-	25	45	75	269	7.00
3/8" Pitch Pulleys for 1" wide Belts. Ref. L100												
P10L100	10	1F	30.32	8	13	29.6	37	32	45	20	-	0.18
P12L100	12	1F	36.38	8	15	35.6	43	32	45	24	-	0.26
P13L100	13	1F	39.41	8	19	38.7	44	32	45	28	-	0.30
P14L100	14	1F	42.45	11	19	41.7	48	32	45	28	-	0.34
P15L100	15	1F	45.48	11	23	44.7	51	32	45	34	-	0.41
P16L100	16	1F	48.51	11	24	47.8	54	32	45	36	-	0.48
P17L100	17	1F	51.54	11	24	50.8	57	32	45	36	-	0.55
P18L100	18	1F	54.57	11	27	53.8	60	32	45	40	-	0.62
P19L100	19	1F	57.61	11	27	56.8	64	32	45	40	-	0.70
P20L100	20	1F	60.64	11	27	59.9	67	32	45	40	-	0.72
P21L100	21	1F	63.67	11	30	62.9	70	32	45	45	-	0.77
P22L100	22	1F	66.70	11	30	65.9	75	32	45	45	-	0.88
P23L100	23	1F	69.73	11	36	69.0	79	32	45	45	-	1.12
P24L100	24	1F	72.77	11	36	72.0	79	32	45	55	-	1.16
P25L100	25	1F	75.80	11	38	75.0	83	32	45	58	-	1.18
P26L100	26	1F	78.83	11	38	78.1	87	32	45	58	-	1.24
P27L100	27	1F	81.86	11	38	81.1	87	32	45	58	-	1.35
P28L100	28	1F	84.89	11	38	84.1	91	32	45	58	-	1.42
P30L100	30	1F	90.96	11	46	90.2	97	32	45	70	-	1.61
P32L100	32	1F	97.02	11	46	96.3	102	32	45	70	-	1.84
P36L100	36	1F	109.15	11	46	108.4	115	32	45	70	-	2.32
P40L100	40	2F	121.28	11	46	120.5	128	32	45	70	100	2.86
P44L100	44	2F	133.40	11	46	132.6	142	32	45	70	112	3.36
P48L100	48	2F	145.53	11	46	144.8	150	32	45	70	124	3.86
P60L100	60	2	181.91	14	45	181.2	-	32	50	75	160	3.55
P72L100	72	2	218.30	14	45	217.5	-	32	50	75	197	5.00
P84L100	84	2	254.68	14	45	253.9	-	32	50	75	233	6.30
P96L100	96	2	291.06	14	45	290.3	-	32	50	75	269	8.20

Pulley Types

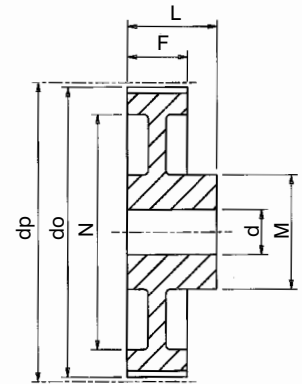
The Pulley types referred to in tables are as drawings below. Suffix 'F' indicates pulley has flanges. Pulley below dividing line in tables are manufactured in cast iron.

Std. Pulleys can be reworked to customers bore and keyway requirements.



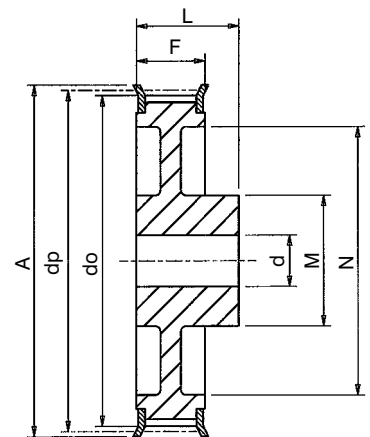
Type 1F

Material: Steel



Type 2

Material: Cast Iron
Webs have lightening holes



Type 2F

Material: Cast Iron
Webs have lightening holes

All dimensions in mm. Other sizes of Pulleys can be supplied on short delivery. All Pulleys can be supplied finish bored and keywayed. Parallel bore pulleys can be machined and fitted with bearings for idler pulleys. When using pulleys as inside idlers it is recommended that number of teeth of idler should be more than that of smaller drive pulley.

Tel +44 121 360 0155

Fax +44 121 325 1079

Email sales@crossmorse.com

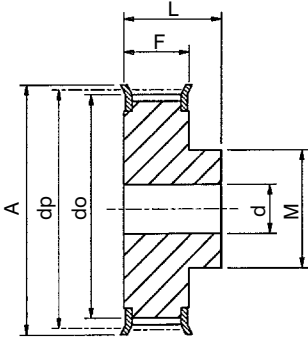
Plain Bore Pulleys for 'H' Series Timing Belts



Pulley Types

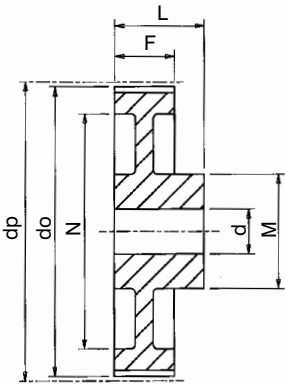
The pulley types referred to in tables are as drawings below. The suffix 'F' indicates pulley has flanges.

Pulleys below dividing line in tables are in Cast iron, and of spoked design. Std. Pulleys can be reworked to customers bore and keyway.



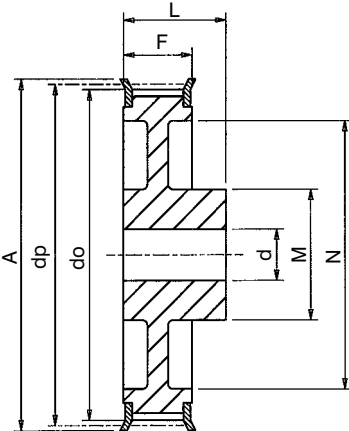
Type 1F

Material: Steel



Type 2

Material: Cast Iron



Type 2F

Material: Cast Iron

Catalogue No.	No. Teeth Z	Pulley Type	Pitch Circle Dia. dp	Min. Bore d	Max. Bore d	Outside Diameter do	Flange Diameter A	Pulley Width F	Bore Length L	Hub Diameter M	Rim Diameter N	Approx Weight kg
1/2" Pitch Pulleys for 1" Wide Belts. Ref. H100												
P14H100	14	1F	56.60	11	30	55.2	64	32	45	45	-	0.67
P16H100	16	1F	64.68	11	30	63.3	70	32	45	45	-	0.88
P18H100	18	1F	72.77	12	36	71.4	79	32	45	55	-	1.06
P19H100	19	1F	76.81	14	40	75.4	83	32	45	60	-	1.23
P20H100	20	1F	80.85	14	41	79.5	87	32	45	62	-	1.33
P21H100	21	1F	84.89	14	43	83.5	91	32	45	65	-	1.43
P22H100	22	1F	88.94	14	45	87.6	93	32	45	68	-	1.63
P24H100	24	1F	97.02	14	47	95.7	102	32	45	72	-	1.95
P26H100	26	1F	105.11	14	54	103.7	112	32	45	80	-	2.30
P28H100	28	1F	113.19	14	54	111.8	120	32	45	80	-	2.53
P30H100	30	1F	121.28	14	54	119.9	128	32	45	80	-	2.93
P32H100	32	1F	129.36	14	54	128.0	135	32	45	80	-	3.06
P36H100	36	2F	145.53	14	48	144.2	150	32	45	80	118	3.92
P40H100	40	2F	161.70	14	48	160.3	168	32	45	80	134	4.95
P44H100	44	2F	177.87	14	48	176.5	184	32	50	80	150	6.20
P48H100	48	2F	194.04	14	54	192.7	200	32	50	90	166	5.30
P60H100	60	2	242.55	19	54	241.2	-	32	50	90	215	7.50
P72H100	72	2	291.06	19	62	289.7	-	32	55	100	263	9.00
P84H100	84	2	339.57	19	62	338.2	-	32	55	100	312	10.00
P96H100	96	2	388.08	19	70	386.7	-	32	60	120	360	13.80
P120H100	120	2	485.10	19	70	483.7	-	32	60	120	458	22.00
1/2" Pitch Pulleys for 1 1/2" Wide Belts. Ref. H150												
P14H150	14	1F	56.60	11	28	55.2	64	46	58	42	-	0.95
P16H150	16	1F	64.68	11	30	63.3	70	46	58	45	-	1.08
P18H150	18	1F	72.77	14	36	71.4	79	46	58	55	-	1.45
P19H150	19	1F	76.81	14	40	75.4	83	46	58	60	-	1.55
P20H150	20	1F	80.85	14	41	79.5	87	46	58	62	-	1.70
P21H150	21	1F	84.89	14	43	83.5	91	46	58	65	-	1.87
P22H150	22	1F	88.94	14	45	87.6	93	46	58	68	-	2.07
P24H150	24	1F	97.02	14	47	95.7	102	46	58	72	-	2.50
P26H150	26	1F	105.11	14	54	103.7	112	46	58	80	-	2.99
P28H150	28	1F	113.19	14	54	111.8	120	46	58	80	-	3.39
P30H150	30	1F	121.28	14	54	119.9	128	46	58	80	-	3.86
P32H150	32	1F	129.36	14	54	128.0	135	46	58	80	-	4.37
P36H150	36	2F	145.53	14	48	144.2	150	46	58	80	118	5.50
P40H150	40	2F	161.70	14	48	160.3	168	46	58	80	134	6.80
P44H150	44	2F	177.87	19	48	176.5	184	46	58	80	150	8.50
P48H150	48	2F	194.04	19	54	192.7	200	46	65	90	166	8.80
P60H150	60	2	242.55	19	54	241.2	-	46	65	90	215	9.00
P72H150	72	2	291.06	24	62	289.7	-	46	65	100	263	11.00
P84H150	84	2	339.57	24	62	338.2	-	46	65	100	312	13.00
P96H150	96	2	388.08	24	70	386.7	-	46	65	120	360	17.00
P120H150	120	2	485.10	24	70	483.7	-	46	65	120	458	25.00
1/2" Pitch Pulleys for 2" Wide Belts. Ref. H200												
P14H200	14	1F	56.60	11	28	55.2	64	59	70	42	-	1.10
P16H200	16	1F	64.68	11	30	63.3	70	59	70	45	-	1.34
P18H200	18	1F	72.77	14	36	71.4	79	59	70	55	-	1.65
P19H200	19	1F	76.81	14	40	75.4	83	59	70	60	-	1.90
P20H200	20	1F	80.85	14	41	79.5	87	59	70	62	-	2.11
P21H200	21	1F	84.89	14	43	83.5	91	59	70	65	-	2.23
P22H200	22	1F	88.94	14	45	87.6	93	59	70	68	-	2.45
P24H200	24	1F	97.02	14	47	95.7	102	59	70	72	-	2.97
P26H200	26	1F	105.11	14	54	103.7	112	59	70	80	-	3.61
P28H200	28	1F	113.19	14	54	111.8	120	59	70	80	-	4.10
P30H200	30	1F	121.28	14	54	119.9	128	59	70	80	-	4.74
P32H200	32	1F	129.36	14	54	128.0	135	59	70	80	-	5.60
P36H200	36	2F	145.53	14	48	144.2	150	59	70	80	118	7.10
P40H200	40	2F	161.70	14	48	160.3	168	59	70	80	134	8.40
P44H200	44	2F	177.87	19	48	176.5	184	59	70	80	150	10.50
P48H200	48	2F	194.04	24	54	192.7	200	59	75	90	166	8.60
P60H200	60	2	242.55	24	54	241.2	-	59	75	90	215	11.00
P72H200	72	2	291.06	28	62	289.7	-	59	75	100	263	14.00
P84H200	84	2	339.57	28	62	338.2	-	59	75	100	312	15.00
P96H200	96	2	388.08	28	70	386.7	-	59	75	120	360	20.30
P120H200	120	2	485.10	28	70	483.7	-	59	75	120	458	28.00
1/2" Pitch Pulleys for 3" Wide Belts. Ref. H300												
P14H300	14	1F	56.60	11	28	55.2	64	86	100	42	-	1.40
P16H300	16	1F	64.68	11	30	63.3	70	86	100	45	-	1.89
P18H300	18	1F	72.77	19	36	71.4	79	86	100	55	-	2.38
P19H300	19	1F	76.81	19	40	75.4	83	86	100	60	-	2.60
P20H300	20	1F	80.85	19	41	79.5	87	86	100	62	-	3.10
P21H300	21	1F	84.89	19	43	83.5	91	86	100	65	-	3.32
P22H300	22	1F	88.94	19	45	87.6	93	86	100	68	-	3.67
P24H300	24	1F	97.02	19	47	95.7	102	86	100	72	-	4.40
P26H300	26	1F	105.11	19	54	103.7	112	86	100	80	-	5.20
P28H300	28	1F	113.19	19	54	111.8	120	86	100	80	-	5.60
P30H300	30	1F	121.28	19	54	119.9	128	86	100	80	-	7.00
P32H300	32	1F	129.36	19	54	128.0	135	86	100	80	-	7.80
P36H300	36	2F	145.53	19	48	144.2	150	86	100	80	118	9.90
P40H300	40	2F	161.70	19	48	160.3	168	86	100	80	134	12.20
P44H300	44	2	177.87	24	48	176.5	-	86	100	80	150	15.00
P48H300	48	2	194.04	24	54	192.7	-	86	100	90	166	11.40
P60H300	60	2	242.55	24	54	241.2	-	86	100	90	215	13.30
P72H300	72	2	291.06	28	62	289.7	-	86	100	100	263	19.00
P84H300	84	2	339.57	28	62	338.2	-	86	100	100	312	20.00
P96H300	96	2	388.08	28	70	386.7	-	86	100	120	360	27.00
P120H300	120	2	485.10	28	70	483.7	-	86	100	120	458	33.00

Other sizes of Pulleys can be supplied on short delivery. All Pulleys can be supplied finish bored and keywayed.

All dimensions in mm.

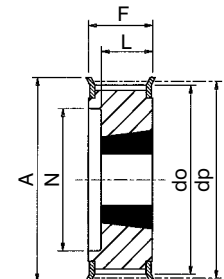
Taper Bore Pulleys for 'L' Series Timing Belts



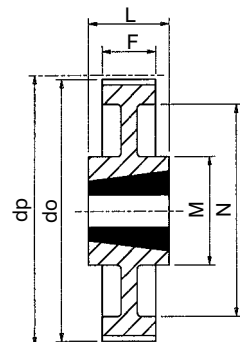
Catalogue No.	No. Teeth Z	Pulley Type	Pitch Circle Diameter dp	Taper Bush Size	Max Bore d	Outside Diameter do	Flange Diameter A	Pulley Width F	Bore Length L	Hub Diameter M	Rim Diameter N	Approx. Weight kg
3/8" Pitch Pulleys for 1/2" wide Belts. Ref. L050												
18L050	18	8F	54.57	1108	28	53.8	60	19	22	45	-	0.17
19L050	19	8F	57.61	1108	28	56.8	64	19	22	45	-	0.20
20L050	20	8F	60.64	1108	28	59.9	67	19	22	48	-	0.23
21L050	21	8F	63.67	1108	28	62.9	70	19	22	48	-	0.30
22L050	22	8F	66.70	1108	28	65.9	75	19	22	51	-	0.36
23L050	23	8F	69.73	1108	28	69.0	79	19	22	54	-	0.41
24L050	24	8F	72.77	1108	28	72.0	79	19	22	54	-	0.45
25L050	25	8F	75.80	1108	28	75.0	83	19	22	56	-	0.50
26L050	26	8F	78.83	1108	28	78.1	86	19	22	60	-	0.55
27L050	27	8F	81.86	1108	28	81.1	86	19	22	62	-	0.61
28L050	28	8F	84.89	1108	28	84.1	91	19	22	65	-	0.68
30L050	30	8F	90.96	1108	28	90.2	97	19	22	70	-	0.82
32L050	32	8F	97.02	1108	28	96.3	102	19	22	74	-	0.98
36L050	36	8F	109.15	1108	28	108.4	115	19	22	85	-	1.38
40L050	40	8F	121.28	1610	42	120.5	128	19	25	88	-	1.75
48L050	48	11F	145.53	1610	42	144.8	150	19	25	88	120	1.76
60L050	60	7	181.91	1610	42	181.2	-	19	25	92	166	2.18
<hr/>												
72L050	72	7	218.30	1610	42	217.5	-	19	25	92	202	3.00
84L050	84	7	254.68	1610	42	253.9	-	19	25	92	236	4.00
96L050	96	7	291.06	2012	50	290.3	-	19	32	106	270	5.50
120L050	120	7	363.83	2012	50	363.1	-	19	32	106	343	6.80
3/8" Pitch Pulleys for 3/4" wide Belts. Ref. L075												
18L075	18	9F	54.57	1108	28	53.8	60	25	25	-	-	0.24
19L075	19	9F	57.61	1108	28	56.8	64	25	25	-	-	0.28
20L075	20	9F	60.64	1108	28	59.9	67	25	25	-	-	0.33
21L075	21	9F	63.67	1108	28	62.9	70	25	25	-	-	0.38
22L075	22	9F	66.70	1108	28	65.9	75	25	25	-	-	0.45
23L075	23	9F	69.73	1108	28	69.0	79	25	25	-	-	0.52
24L075	24	9F	72.77	1108	28	72.0	79	25	25	-	-	0.58
25L075	25	9F	75.80	1108	28	75.0	83	25	25	-	-	0.64
26L075	26	9F	78.83	1108	28	78.1	86	25	25	-	-	0.71
27L075	27	9F	81.86	1108	28	81.1	86	25	25	-	-	0.79
28L075	28	9F	84.89	1108	28	84.1	91	25	25	-	-	0.86
30L075	30	9F	90.96	1108	28	90.2	97	25	25	-	-	1.04
32L075	32	9F	97.02	1108	28	96.3	102	25	25	-	-	1.21
36L075	36	9F	109.15	1610	42	108.4	115	25	25	-	-	1.41
40L075	40	9F	121.28	1610	42	120.5	128	25	25	-	-	1.86
48L075	48	10F	145.53	1610	42	144.8	150	25	25	92	120	2.50
60L075	60	10	181.91	1610	42	181.2	-	25	25	92	166	3.00
<hr/>												
72L075	72	10	218.30	1610	42	217.5	-	25	25	92	202	4.00
84L075	84	7	254.68	2012	50	253.9	-	25	32	92	236	5.20
96L075	96	7	291.06	2012	50	290.3	-	25	32	106	270	6.50
120L075	120	7	363.83	2012	50	363.1	-	25	32	106	343	7.60
3/8" Pitch Pulleys for 1" wide Belts. Ref. L100												
18L100	18	5F	54.57	1108	28	53.8	60	31	22	-	38	0.25
19L100	19	5F	57.61	1108	28	56.8	64	31	22	-	38	0.31
20L100	20	5F	60.64	1108	28	59.9	67	31	22	-	45	0.36
21L100	21	5F	63.67	1108	28	62.9	70	31	22	-	45	0.41
22L100	22	5F	66.70	1108	28	65.9	75	31	22	-	48	0.47
23L100	23	5F	69.73	1108	28	69.0	79	32	22	-	52	0.53
24L100	24	5F	72.77	1108	28	72.0	79	32	22	-	52	0.60
25L100	25	5F	75.80	1108	28	75.0	83	32	22	-	54	0.67
26L100	26	5F	78.83	1108	28	78.1	86	32	22	-	60	0.73
27L100	27	5F	81.86	1108	28	81.1	86	32	22	-	60	0.80
28L100	28	5F	84.89	1108	28	84.1	91	32	22	-	65	0.87
30L100	30	5F	90.96	1210	32	90.2	97	32	25	-	71	0.98
32L100	32	5F	97.02	1210	32	96.3	102	32	25	-	75	1.18
36L100	36	5F	109.15	1610	42	108.4	115	32	25	-	86	1.42
40L100	40	5F	121.28	1610	42	120.5	128	32	25	-	96	1.70
48L100	48	14F	145.53	1610	42	144.8	150	32	25	92	120	2.70
60L100	60	12	181.91	1610	42	181.2	-	32	25	92	166	2.40
<hr/>												
72L100	72	10	218.30	2012	50	217.5	-	32	32	92	202	4.40
84L100	84	10	254.68	2012	50	253.9	-	32	32	92	236	6.00
96L100	96	10	291.06	2012	50	290.3	-	32	32	106	270	7.10
120L100	120	10	363.83	2012	50	363.1	-	32	32	106	343	8.50

Pulley Types

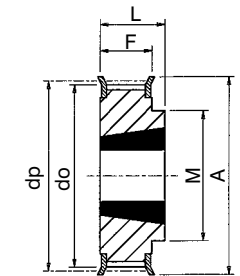
Pulley types referred to in tables are as drawings below. The suffix 'F' indicates pulley has flanges. Pulleys below dividing line in tables are manufactured in cast iron. Types 7, 10 & 12 when in cast iron have lightening holes.



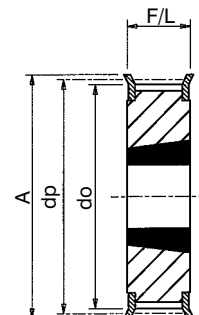
Type 5F



Type 7



Type 8F



Type 9F

All dimensions in mm. For Taper Bush dimensions refer page 25.

Pulley Installation

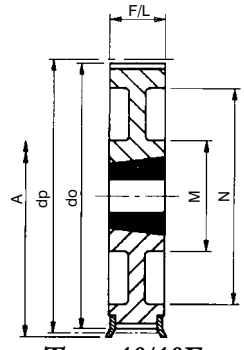
Correct and accurate installation of Timing Drives is essential. Pulley alignment and shaft parallelism is very important as misalignment of the drive will cause unequal loading across the belt width and edge wear of belt on flanges. Pulley alignment can be checked by placing a straight edge against the outside edge of the pulleys and adjusting so contact made evenly across both pulleys. The shaft should be located within a rigid framework, as any distortion under load could result in a reduction of centre distance which will cause jumping of belt on pulley teeth. If idlers are used they must be locked firmly into position after correct belt tensioning. Refer to page 10 for additional information on drive installation.

Tel +44 121 360 0155

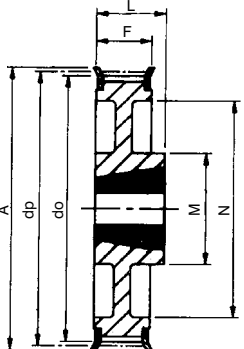
Fax +44 121 325 1079

Email sales@crossmorse.com

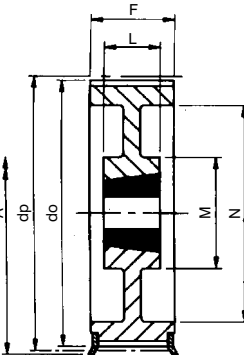
Taper Bore Pulleys for 'H' Series Timing Belts



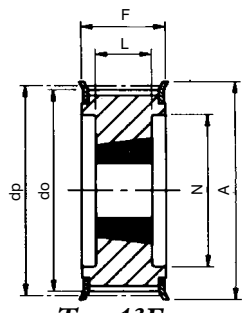
Types 10/10F



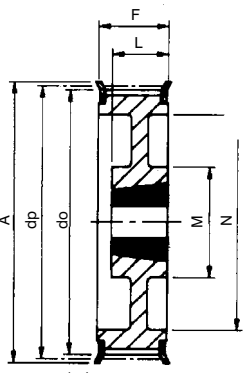
Type 11F



Type 12/12F



Type 13F



Type 17F

Catalogue No.	No. Teeth Z	Pulley Type	Pitch Circle Diameter dp	Taper Bush Size	Max Bore	Outside Diameter do	Flange Diameter A	Pulley Width F	Bore Length L	Hub Diameter M	Rim Diameter N	Approx. Weight kg
1/2" Pitch Pulleys for 1" wide Belts. Ref. H100												
16H100	16	5F	64.68	1108	28	63.3	70	31	22	-	45	0.88
18H100	18	5F	72.77	1210	32	71.4	79	31	25	-	52	1.06
19H100	19	5F	76.81	1210	32	75.4	83	31	25	-	56	1.23
20H100	20	5F	80.55	1210	32	79.5	87	31	25	-	60	1.33
21H100	21	5F	84.89	1210	32	83.5	91	32	25	-	64	1.43
22H100	22	5F	88.94	1210	32	87.6	93	32	25	-	67	1.63
23H100	23	5F	92.98	1610	42	91.6	97	32	25	-	70	1.85
24H100	24	5F	97.02	1610	42	95.7	102	32	25	-	74	1.93
25H100	25	5F	101.06	1610	42	99.7	106	32	25	-	77	2.07
26H100	26	5F	105.11	1610	42	103.7	112	32	25	-	82	2.30
27H100	27	5F	109.15	1610	42	107.8	115	32	25	-	85	2.40
28H100	28	5F	113.19	1610	42	111.8	120	32	25	-	90	2.53
30H100	30	5F	121.28	1610	42	119.9	128	32	25	-	98	2.93
32H100	32	17F	129.36	1610	42	128.0	135	32	25	80	106	3.06
36H100	36	17F	145.53	1610	42	144.2	150	32	25	92	121	3.92
40H100	40	17F	161.70	1610	42	160.3	168	32	25	92	138	4.95
44H100	44	10F	177.87	2012	50	176.5	184	32	32	106	152	6.20
48H100	48	10F	194.04	2012	50	192.7	200	32	32	106	169	5.30
60H100	60	12	242.55	2012	50	241.2	-	34	32	92	223	7.50
72H100	72	12	291.06	2012	50	289.7	-	34	32	92	270	9.00
84H100	84	12	339.57	2012	50	338.2	-	34	32	92	318	10.00
96H100	96	7	388.08	2517	60	386.7	-	34	45	106	366	13.80
120H100	120	7	485.10	2517	60	483.7	-	34	45	106	462	22.00
1/2" Pitch Pulleys for 1 1/2" wide Belts. Ref. H150												
18H150	18	5F	72.77	1210	32	71.4	79	45	25	-	52	1.45
19H150	19	5F	76.81	1210	32	75.4	83	45	25	-	56	1.55
20H150	20	5F	80.55	1210	32	79.5	87	45	25	-	60	1.70
21H150	21	5F	84.89	1210	32	83.5	91	45	25	-	64	1.87
22H150	22	5F	88.94	1210	32	87.6	93	45	25	-	67	2.07
23H150	23	5F	92.98	1610	42	91.6	97	45	25	-	70	2.28
24H150	24	5F	97.02	1610	42	95.7	102	45	25	-	74	2.50
25H150	25	5F	101.06	1610	42	99.7	106	45	25	-	77	2.71
26H150	26	5F	105.11	1610	42	103.7	112	45	25	-	82	2.99
27H150	27	5F	109.15	1610	42	107.8	115	45	25	-	85	3.15
28H150	28	5F	113.19	1610	42	111.8	120	45	25	-	90	3.39
30H150	30	5F	121.28	1610	42	119.9	128	45	25	-	98	3.86
32H150	32	17F	129.36	1610	42	128.0	135	45	25	80	106	4.37
36H150	36	17F	145.53	1610	42	144.2	150	45	25	92	121	5.50
40H150	40	17F	161.70	1610	42	160.3	168	45	25	92	138	6.80
44H150	44	17F	177.87	2012	50	176.5	184	45	32	106	152	8.50
48H150	48	17F	194.04	2012	50	192.7	200	45	32	106	169	8.80
60H150	60	12	242.55	2012	50	241.2	-	46	32	92	223	9.00
72H150	72	12	291.06	2012	50	289.7	-	46	32	92	270	11.00
84H150	84	12	339.57	2012	50	338.2	-	46	32	92	320	13.00
96H150	96	12	388.08	2517	60	386.7	-	46	45	106	366	17.00
120H150	120	12	485.10	2517	60	483.7	-	46	45	106	462	25.00
1/2" Pitch Pulleys for 2" wide Belts. Ref. H200												
18H200	18	5F	72.77	1210	32	71.4	79	58	25	-	52	1.65
19H200	19	5F	76.81	1210	32	75.4	83	58	25	-	56	1.90
20H200	20	5F	80.55	1610	42	79.5	87	58	25	-	60	2.11
21H200	21	5F	84.89	1610	42	83.5	91	58	25	-	64	2.23
22H200	22	5F	88.94	1610	42	87.6	93	58	25	-	67	2.45
23H200	23	5F	92.98	1610	42	91.6	97	58	25	-	70	2.71
24H200	24	5F	97.02	1610	42	95.7	102	58	25	-	74	2.97
25H200	25	5F	101.06	1610	42	99.7	106	58	25	-	77	3.32
26H200	26	5F	105.11	1610	42	103.7	112	58	25	-	82	3.61
27H200	27	5F	109.15	1610	42	107.8	115	58	25	-	85	3.90
28H200	28	5F	113.19	1610	42	111.8	120	58	25	-	90	4.10
30H200	30	5F	121.28	1610	42	119.9	128	58	25	-	98	4.74
32H200	32	5F	129.36	2012	50	128.0	135	58	32	-	106	5.60
36H200	36	17F	145.53	2012	50	144.2	150	58	32	102	121	7.10
40H200	40	17F	161.70	2012	50	160.3	168	58	32	106	140	8.40
44H200	44	17F	177.87	2012	50	176.5	184	58	32	106	150	10.50
48H200	48	17F	194.04	2517	60	192.7	200	58	45	119	168	8.60
60H200	60	12	242.55	2517	60	241.2	-	60	45	119	223	11.00
72H200	72	12	291.06	2517	60	289.7	-	60	45	119	270	14.00
84H200	84	12	339.57	2517	60	338.2	-	60	45	119	318	15.00
96H200	96	12	388.08	2517	60	386.7	-	60	45	119	366	20.30
120H200	120	12	485.10	2517	60	483.7	-	60	45	119	462	28.00
1/2" Pitch Pulleys for 3" wide Belts. Ref. H300												
20H300	20	13F	80.55	1615	42	79.5	87	84	38	-	65	3.10
21H300	21	13F	84.89	1615	42	83.5	91	84	38	-	65	3.32
22H300	22	13F	88.94	1615	42	87.6	93	84	38	-	67	3.67
23H300	23	13F	92.98	1615	42	91.6	97	84	38	-	70	4.00
24H300	24	13F	97.02	1615	42	95.7	102	84	38	-	74	4.40
25H300	25	13F	101.06	1615	42	99.7	106	84	38	-	77	4.79
26H300	26	13F	105.11	1615	42	103.7	112	84	38	-	82	5.20
27H300	27	13F	109.15	2012	50	107.8	115	84	32	-	85	5.40
28H300	28	13F	113.19	2012	50	111.8	120	84	32	-	90	5.60
30H300	30	13F	121.28	2012	50	119.9	128	84	32	-	98	7.00
32H300	32	13F	129.36	2517	60	128.0	135	84	45	-	106	7.80
36H300	36	13F	145.53	2517	60	144.2	150	84	45	-	121	9.90
40H300	40	13F	161.70	2517	60	160.3	168	84	45	119	138	12.20
48H300	48	12F	194.04	2517	60	192.7	200	86	45	119	168	11.40
60H300	60	12	242.55	2517	60	241.2	-	86	45	119	223	13.30
72H300	72	12	291.06	2517	60	289.7	-	86	45	119	270	19.00
84H300	84	12	339.57	2517	60	338.2	-	86	45	119	318	20.00
96H300	96	12	388.08	3030	75	386.7	-	86	76	150	366	27.00
120H300	120	12	485.10	3030	75	483.7	-	86	76	150	462	33.00

Tel +44 121 360 0155 Fax +44 121 325 1079 Email sales@crossmorse.com

All dimensions in mm. For details of Taper Bushes refer to page 25.