

British Standard Stainless Steel and Corrosion Resistant Roller Chains

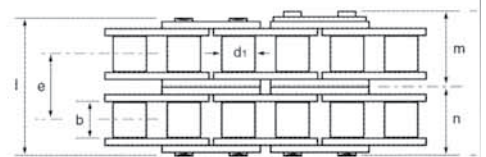
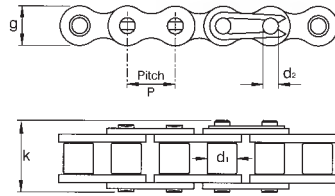


Cross+Morse SS - Stainless Steel chain has been designed with a higher allowable load than other makes of stainless steel chain and is suitable for use in the most demanding applications. Where WATER, ACIDS, ALKALIS, CHEMICALS, HIGH HUMIDITY AND EXTREMES OF TEMPERATURE are encountered - conditions potentially destructive to ordinary transmission chain, SS chain provide the answer.



SS chain completely overcomes corrosion and wear problems normally encountered with standard chain used in such harsh conditions.

Remaining impervious to even the most severe chemicals required for cleaning and hygiene maintenance within food and pharmaceutical processing, SS chain offers proven high-performance and maintenance-free life time performance.



Cat No.	Pitch P inches	Inside Width mm	Roller Diameter d ₁ mm	Pin Diameter d ₂ mm	Plate Depth mm	Pin Lengths				Transverse Pitch mm	Bearing Area cm ²	Ultimate Tensile kN	Maximum Allowable kN	Approx Weight kg/m
						l max. mm	m2 max. mm	m mm	n mm					
BS Series Simplex Chains														
04B-1SS	6mm	2.80	4.00	1.85	5.0	7.4	10.2	6.5	3.7	-	0.07	2.2	0.08	0.12
05B-1SS	8mm	3.00	5.00	2.31	7.1	8.6	11.7	7.4	4.3	-	0.11	3.5	0.11	0.18
06B-1SS	3/8	5.72	6.35	3.28	8.3	12.6	14.2	7.1	6.3	-	0.28	6.2	0.40	0.41
08B-1SS	1/2	7.75	8.51	4.45	11.8	16.7	17.8	9.4	8.4	-	0.50	10.3	0.78	0.70
10B-1SS	5/8	9.65	10.16	5.08	14.7	19.0	20.6	11.1	9.5	-	0.67	15.7	1.02	0.96
12B-1SS	3/4	11.68	12.07	5.72	16.1	22.0	23.6	12.6	11.0	-	0.89	18.1	1.32	1.23
16B-1SS	1	17.02	15.88	8.28	21.1	35.1	38.2	20.6	17.6	-	2.10	42.2	3.09	2.60
20B-1SS	1.1/4	19.56	19.05	10.19	26.3	41.0	44.1	23.6	20.5	-	2.95	64.0	3.05	3.70
24B-1SS	1.1/2	25.40	25.40	14.63	33.3	53.4	56.9	30.2	26.7	-	5.54	110.0	5.60	6.90
BS Series Duplex Chains														
06B-2SS	3/8	5.72	6.35	3.28	8.3	22.9	23.6	12.2	11.4	10.24	0.55	12.2	0.57	0.78
08B-2SS	1/2	7.75	8.51	4.45	11.8	30.7	31.7	16.4	15.4	13.92	1.00	20.4	1.05	1.40
10B-2SS	5/8	9.65	10.16	5.08	14.7	35.6	37.2	19.4	17.8	16.59	1.34	31.2	1.38	1.80
12B-2SS	3/4	11.68	12.07	5.72	16.1	41.4	43.1	22.3	20.7	19.46	1.78	36.0	1.82	2.44
16B-2SS	1	17.02	15.88	8.28	21.1	67.6	70.1	36.5	33.5	31.88	4.21	84.0	4.30	5.30
20B-2SS	1.1/4	19.56	19.05	10.19	26.3	77.5	80.6	41.8	38.7	36.45	5.90	125.0	6.00	7.45

Chains from Stock, other chains to order.

Chains to Triplex Construction can also be supplied to special order.

Standard Chain components are all manufactured in 304 (18-8) Nickel Chrome Stainless Steel. The chains are suitable for temperatures up to 350°C, with intermittent peaks of 500°C, and also for the sub- zero conditions involved in food packaging.

Chains can also be supplied in 316 grade Stainless Steel for applications involving strong acids, or where a totally non-magnetic chain is required. Temperatures of 500°C, with intermittent peaks of 650°C are possible with these chains. These chains should only be used where conditions demand as they do not have the same wear life properties as the standard chain, and for this reason it is recommended that working loads should not exceed half those recommended for standard Stainless Steel Chain.

Alternate Corrosion Protection Treatments

For many applications plated chains, and standard chain with chemical surface treatment can provide the level of corrosion resistance at a lower cost. Cross and Morse offer the following standard treatments.

Aqua Proof Roller Chains

A special coating applied to chain components which offers excellent corrosion resistance without the hydrogen embrittlement problems associated with plating. The strength and working load values of the base chain are fully retained. Can be used in outdoor environments, seawater applications etc.

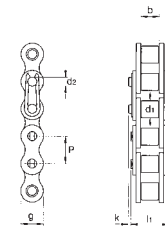
Cat. No.	Pitch Inches P	Inside Width mm b	Roller Diameter mm d ₁	Pin Diameter mm d ₂	Plate Depth mm g	Pin Length max. mm l ₁	Conn Pin Ext. mm k	Transverse Pitch mm e	Bearing Area cm ²	Tensile Strength N	Approx. Weight kg/m
06B1-AP	3/8	5.72	6.35	3.28	8.30	12.60	2.20		0.28	9.10	0.41
08B1-AP	1/2	7.75	8.51	4.45	11.80	16.20	2.10		0.50	18.20	0.70
10B1-AP	5/8	9.65	10.16	5.08	14.70	18.60	2.20		0.67	22.70	0.96
12B1-AP	3/4	11.68	12.07	5.72	16.10	21.90	2.60		0.89	29.00	1.23
16B1-AP	1	17.02	15.88	8.28	21.10	35.60	3.10		2.10	64.00	2.60



Nickel Plated BS Roller Chains

Electroless nickel plating is applied to standard carbon steel chain, offering protection to surfaces where mild corrosion is likely. The plated chain retains all the inherent properties of the base chain.

Cat. No.	Pitch Inches P	Inside Width mm b	Roller Diameter mm d ₁	Pin Diameter mm d ₂	Plate Depth mm g	Pin Length max. mm l ₁	Conn Pin Ext. mm k	Transverse Pitch mm e	Bearing Area cm ²	Tensile Strength N	Approx. Weight kg/m
06B1-N	3/8	5.72	6.35	3.28	8.30	12.60	2.20		0.28	9.10	0.41
08B1-N	1/2	7.75	8.51	4.45	11.80	16.20	2.10		0.50	18.20	0.70
10B1-N	5/8	9.65	10.16	5.08	14.70	18.60	2.20		0.67	22.70	0.96
12B1-N	3/4	11.68	12.07	5.72	16.10	21.90	2.60		0.89	29.00	1.23
16B1-N	1	17.02	15.88	8.28	21.10	35.60	3.10		2.10	64.00	2.60
20B1-N	1.1/4	19.56	19.05	10.19	26.30	41.00	3.10		2.95	98.00	3.70



MolyPaul Treated Chains

A hard coating of dry lubricant, including MoS₂ and Graphite is chemically bonded to the surface of all chain components. The treated chain has excellent dry lubricant properties, with good corrosion resistance, and ability to work up to 200°C. Available all sizes of chains up to 1 1/2" pitch. The chains with corrosion protection are suitable for many outdoor applications including Car Washers, Automated Car Parking, Agricultural Equipment, Tanneries, and Marine environments. When used with additional lubrication long chain life can be achieved.

British Standard Stainless Steel and Corrosion Resistant Roller Chains



Tel +44(0) 121 360 0155

Fax +44(0) 121 325 1079

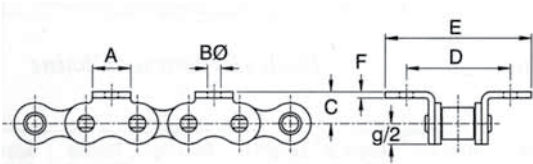
Email sales@crossmorse.com

Standard Attachments for Conveying Applications

The attachments shown on the opposite page enable standard Stainless Steel chains to be used in a variety of conveying applications. Available on a 72 hour service built into the base chain at spacings to suit the application. The K and M attachments can be fitted to one side of the chain only or both sides (as illustrated). Attachments of different designs can be fitted into one chain assembly. In addition to the standard attachments, custom made units are available on a short lead time, to meet customers specific requirements. Attachments can also be assembled into Duplex and Triplex Chains. If Attachment Chains are used in parallel on Conveying Applications they should be ordered as **matched pairs**.

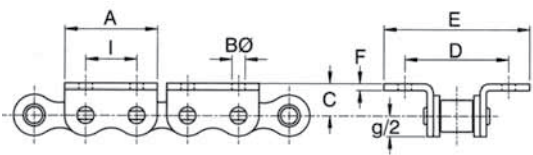
Bent Attachments

K1 - Single Hole Bent Attachment



Base Chain Ref.	Pitch P	Attach Width A	Hole Dia B	Plate Height C	Transverse Pitch D	Overall Width E	Plate Thick F
08B-1	1/2"	11.5	4.2	8.9	23.8	36	1.5
10B-1	5/8"	12.8	5.3	10.3	31.8	45	1.5
12B-1	3/4"	16.6	7.1	13.5	38.1	58	1.8

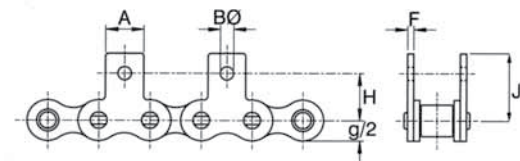
K2 - Two Hole Bent Attachment



Base Chain Ref.	Pitch P	Attach Width A	Hole Dia B	Plate Height C	Transverse Pitch D	Overall Width E	Plate Thick F	Hole Pitch I
08B-1	1/2"	23.4	4.9	8.9	23.8	40	1.5	12.7
10B-1	5/8"	28.6	5.3	10.3	31.8	49	1.5	15.9
12B-1	3/4"	34	6.5	13.5	38.1	52	1.8	19.1

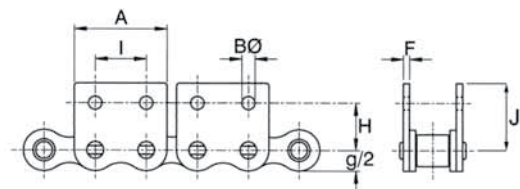
Straight Attachments

M1 - Single Hole Straight Attachment



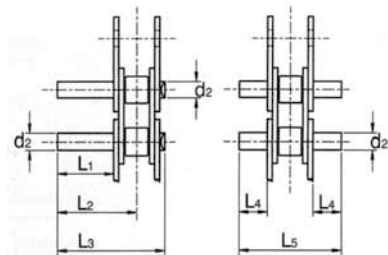
Base Chain Ref.	Pitch P	Attach Width A	Hole Dia B	Hole Height H	Plate Height J	Plate Thick F
08B-1	1/2"	11.5	4.2	12.7	19.0	1.5
10B-1	5/8"	12.8	5.3	15.9	22.9	1.5
12B-1	3/4"	16.6	7.1	22.2	31.9	1.8

M2 - Two Hole Straight Attachment



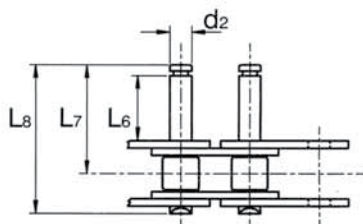
Base Chain Ref.	Pitch P	Attach Width A	Hole Dia B	Hole Height H	Plate Height J	Plate Thick F	Plate Thick F
08B-1	1/2"	23.4	4.9	13.0	12.7	20.8	1.5
10B-1	5/8"	28.6	5.3	16.5	15.9	24.9	1.5
12B-1	3/4"	34.0	6.5	21.0	19.1	28.2	1.8

Straight Parallel Pins extended one side only E1, or equally extended both sides of chain E2. Attachments available with short or long pins.



Attachment Ref.		E1 Short			E1 Long		E2 Short		E2 Long		
Chain Ref	Pitch	Pin to Ø	Extension	Pin Ø	Pin Length	Extension	Pin Length	Extension	Pin Length	Extension	Pin Length
	P	d ₂	L ₁	L ₂	L ₃	L ₁	L ₃	L ₄	L ₅	L ₄	L ₅
08B-1	1/2"	4.45	14.8	21.8	30.0	28.8	44.0	7.9	30.0	14.9	44.0
10B-1	5/8"	5.08	17.8	26.1	35.4	34.4	52.0	9.4	35.4	17.8	52.0
12B-1	3/4"	5.72	20.7	30.4	41.4	40.1	60.8	10.9	41.4	20.7	60.8
16B-1	1"	8.28	33.8	49.7	67.5	65.6	99.4	17.9	67.5	33.8	99.4

Parallel Pins with grooves for circlip fixture location. Available short Pins E3 attachment, or long pins - E4 attachment



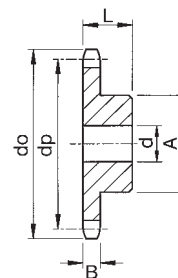
Attachment Ref.		E3 Short Groove Pin			E4 Long Groove Pin			
Chain Ref	Pitch	Pin to Ø	Attach Length	Pin Ø	Pin Length	Attach Length	Pin Ø	Pin Length
	P	d ₂	L ₆	L ₇	L ₈	L ₆	L ₇	L ₈
08B-1	1/2"	4.45	7.2	17.0	25.1	14.2	23.1	31.3
10B-1	5/8"	5.08	9.5	21.2	30.5	17.0	27.3	36.6
12B-1	3/4"	5.72	11.8	25.3	36.3	19.5	32.0	43.0
16B-1	1"	8.28	15.8	36.9	54.7	32.2	51.9	69.1

Standard Stainless Steel Sprockets for 3/8" to 1" Pitch British Standard Chains Types 06S1-12 to 10S1-18



Conforming to ISO Std 606

Sprocket Data



Chain No.	Tooth Width B
06B-1	5.3
08B-1	7.2
10B-1	9.2
ANSI 50	9.2
12B-1	11.2
16B-1	16.2

A standard stock range of sprockets manufactured from Stainless Steel type ANSI 304L for maximum corrosion resistance. These sprockets are suitable for corrosive environments, including the high temperature and moisture conditions found in many food process and packaging operations, and will also withstand many alkaline and acidic fluids at elevated temperatures.

The sprockets are suitable to use with either stainless steel chains or plated chains, refer page 18.

Cat No.	Pitch	No of Teeth	Pitch Circle Ø dp	Outside Ø do	Min. Bore d	Max. Bore d	L.T.B. L	Hub Ø A	Weight
06S1-12	3/8"	12	36.80	40.00	8.00	16.00	25.00	25.00	0.11
06S1-13		13	39.80	43.00	10.00	19.00	25.00	28.00	0.13
06S1-14		14	42.80	46.30	10.00	20.00	25.00	31.00	0.16
06S1-15		15	45.81	49.30	10.00	23.00	25.00	34.00	0.19
06S1-16		16	48.82	52.30	10.00	25.00	28.00	37.00	0.24
06S1-17		17	51.84	55.30	10.00	27.00	28.00	40.00	0.29
06S1-18		18	54.85	58.30	10.00	29.00	28.00	43.00	0.33
06S1-19		19	57.87	61.30	10.00	30.00	28.00	45.00	0.37
06S1-20		20	60.89	64.30	10.00	31.00	28.00	46.00	0.39
06S1-21		21	63.91	68.00	12.00	32.00	28.00	48.00	0.42
06S1-22		22	66.93	71.00	12.00	34.00	28.00	50.00	0.47
06S1-23		23	69.95	73.50	12.00	35.00	28.00	52.00	0.50
06S1-24	24	72.97	77.00	12.00	36.00	28.00	54.00	0.55	
06S1-25	25	76.00	80.00	12.00	38.00	28.00	57.00	0.61	
06S1-30	30	91.12	94.70	12.00	40.00	28.00	60.00	0.92	
08S1-12	1/2"	12	49.07	53.00	10.00	22.00	28.00	33.00	0.21
08S1-13		13	53.07	57.90	10.00	25.00	28.00	37.00	0.26
08S1-14		14	57.07	61.80	10.00	27.00	28.00	41.00	0.31
08S1-15		15	61.08	65.50	10.00	30.00	28.00	45.00	0.39
08S1-16		16	65.10	69.90	12.00	34.00	28.00	50.00	0.46
08S1-17		17	69.12	73.60	12.00	35.00	28.00	52.00	0.51
08S1-18		18	73.14	78.00	12.00	37.00	28.00	56.00	0.59
08S1-19		19	77.16	81.70	12.00	40.00	28.00	60.00	0.67
08S1-20		20	81.18	86.00	12.00	43.00	28.00	64.00	0.55
08S1-21		21	85.21	90.10	14.00	45.00	28.00	68.00	0.84
08S1-22		22	89.24	93.80	14.00	46.00	28.00	70.00	0.91
08S1-23		23	93.27	98.10	14.00	46.00	28.00	70.00	0.94
08S1-24		24	97.30	101.80	14.00	46.00	28.00	70.00	1.00
08S1-25		25	101.33	105.80	14.00	54.00	28.00	80.00	1.10
08S1-26		26	105.36	110.00	16.00	46.00	28.00	70.00	1.09
08S1-27		27	109.40	114.00	16.00	46.00	30.00	80.00	1.12
08S1-30	30	121.50	126.30	16.00	54.00	30.00	80.00	1.48	
08S1-34	34	137.64	142.60	16.00	63.00	30.00	90.00	1.87	
08S1-38	38	153.79	158.60	20.00	63.00	35.00	90.00	2.00	
08S1-40	40	161.87	166.80	20.00	63.00	35.00	90.00	2.38	
10S1-10	5/8"	10	41.10	57.50	10.00	24.00	25.00	35.00	0.22
10S1-11		11	45.08	63.00	12.00	25.00	30.00	37.00	0.29
10S1-12		12	49.07	68.00	12.00	28.00	30.00	42.00	0.38
10S1-13		13	66.33	73.00	12.00	31.00	30.00	47.00	0.47
10S1-14		14	71.34	78.00	12.00	35.00	30.00	52.00	0.60
10S1-15		15	76.35	83.00	12.00	38.00	30.00	57.00	0.67
10S1-16		16	81.37	88.00	12.00	40.00	30.00	60.00	0.76
10S1-17		17	86.39	93.00	12.00	40.00	30.00	60.00	0.82
10S1-18		18	91.42	98.30	12.00	46.00	30.00	70.00	1.02

Tel +44(0) 121 360 0155

Fax +44(0) 121 325 1079

Email sales@crossmorse.com

Standard Stainless Steel Sprockets for 3/8" to 1" Pitch British Standard Chains Types 10S1-19 to 16S1-30

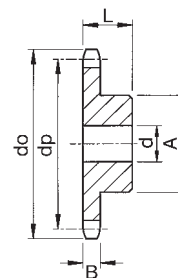


Conforming to ISO Std 606

Sprocket Data

A standard stock range of sprockets manufactured from Stainless Steel type ANSI 304L for maximum corrosion resistance. These sprockets are suitable for corrosive environments, including the high temperature and moisture conditions found in many food process and packaging operations, and will also withstand many alkaline and acidic fluids at elevated temperatures.

The sprockets are suitable to use with either stainless steel chains or plated chains, refer page 18.



Chain No.	Tooth Width B
06B-1	5.3
08B-1	7.2
10B-1	9.2
ANSI 50	9.2
12B-1	11.2
16B-1	16.2

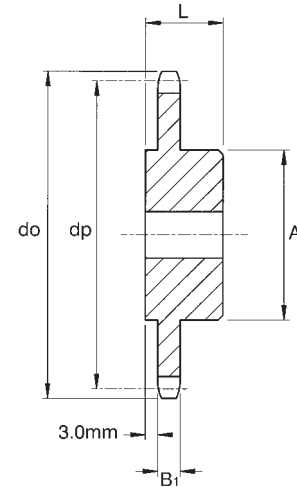
Cat No.	Pitch	No of Teeth	Pitch Circle Ø dp	Outside Ø do	Min. Bore d	Max. Bore d	L.T.B. L	Hub Ø A	Weight
10S1-19	5/8"	19	96.45	103.30	14.00	50.00	30.00	75.00	1.15
10S1-20		20	101.48	108.40	14.00	50.00	30.00	75.00	1.21
10S1-21		21	106.51	113.40	16.00	54.00	30.00	80.00	1.36
10S1-22		22	111.55	118.00	16.00	54.00	30.00	80.00	1.40
10S1-23		23	116.59	123.40	16.00	54.00	30.00	80.00	1.46
10S1-24		24	121.62	128.30	16.00	54.00	30.00	80.00	1.53
10S1-25		25	126.66	134.00	16.00	54.00	30.00	80.00	1.59
10S1-26		26	131.70	139.00	20.00	57.00	35.00	85.00	1.82
10S1-30		30	151.87	158.80	20.00	60.00	35.00	90.00	2.39
10S1-35		35	177.10	184.10	20.00	63.00	35.00	95.00	2.00
12S1-11	3/4"	11	56.35	75.00	14.00	31.00	35.00	46.00	0.54
12S1-12		12	61.34	81.50	14.00	35.00	35.00	52.00	0.70
12S1-13		13	79.60	87.50	16.00	38.00	35.00	58.00	0.80
12S1-14		14	85.61	93.60	14.00	43.00	35.00	64.00	1.00
12S1-15		15	91.63	99.80	16.00	46.00	35.00	70.00	1.16
12S1-16		16	97.65	105.00	16.00	50.00	35.00	75.00	1.34
12S1-17		17	103.67	115.50	16.00	54.00	35.00	80.00	1.53
12S1-18		18	109.70	118.00	16.00	54.00	35.00	80.00	1.61
12S1-19		19	115.74	124.20	16.00	54.00	35.00	80.00	1.70
12S1-20		20	121.78	129.70	16.00	54.00	35.00	80.00	1.79
12S1-21		21	127.82	136.00	20.00	60.00	40.00	90.00	2.34
12S1-22		22	133.86	141.80	20.00	60.00	40.00	90.00	2.40
12S1-23		23	139.90	149.00	20.00	60.00	40.00	90.00	2.55
12S1-24		24	145.95	153.90	20.00	60.00	40.00	90.00	2.74
12S1-25	25	151.99	160.00	20.00	60.00	40.00	90.00	2.77	
12S1-27	27	164.09	144.00	20.00	57.00	35.00	85.00	2.77	
12S1-30	30	182.25	190.50	20.00	63.00	40.00	95.00	3.72	
16S1-12	1"	12	73.60	109.00	16.00	46.00	40.00	69.00	1.34
16S1-13		13	106.14	117.00	16.00	52.00	40.00	78.00	1.68
16S1-14		14	114.15	125.00	16.00	56.00	40.00	84.00	2.03
16S1-15		15	122.17	133.00	16.00	61.00	40.00	92.00	2.41
16S1-16		16	130.20	141.00	19.00	67.00	45.00	100.00	3.12
16S1-17		17	138.23	149.00	20.00	67.00	45.00	100.00	3.31
16S1-18		18	146.27	157.00	20.00	67.00	45.00	100.00	3.52
16S1-19		19	154.32	165.20	20.00	67.00	45.00	100.00	3.74
16S1-20		20	162.37	173.00	20.00	67.00	45.00	100.00	3.97
16S1-21		21	170.42	181.20	20.00	74.00	50.00	100.00	4.89
16S1-22		22	178.48	189.30	20.00	74.00	50.00	110.00	5.14
16S1-23		23	186.54	197.50	20.00	74.00	50.00	110.00	5.62
16S1-24		24	194.60	205.50	20.00	74.00	50.00	110.00	5.90
16S1-25		25	202.66	213.50	20.00	74.00	50.00	110.00	6.18
16S1-30		30	243.00	254.00	20.00	80.00	50.00	120.00	8.13

Original T. D. Cross Sprockets

Refs. H11 and H11A with Double Boss
to suit 1/2" Pitch Chains Types 086 and 08B-1



These sprockets are to original T. D. Cross & Sons dimensions with a small boss on the face side of the sprocket, to act as spacer. All sprockets, now manufactured from medium carbon steel for improved wear life, are suitable for induction hardening.



Simplex Sprocket

Sprocket Type	H11	H11A
Chain Ref.	086	08B-1
Chain Size	1/2" x 0.205"	1/2" x 5/16"
Roller Diameter	8.51mm	8.51mm
Tooth Width B ₁	4.7mm	7.2mm

Sprocket Series H11 for 1/2" Pitch Narrow Series Chain Ref. 086

Cat No.	No. Teeth	Pitch Circle Ø dp	Outside Ø do max.	Stock Bore d H8	Max. Bore d max.	Hub dia. A	Length L	App. Weight kg
H11-10	10	41.10	46.3	12.70	18	27.0	25.4	0.11
H11-11	11	45.07	50.3	12.70	18	27.0	25.4	0.14
H11-12	12	49.07	54.4	12.70	24	35.0	25.4	0.18
H11-13	13	53.06	58.2	12.70	24	35.0	25.4	0.24
H11-14	14	57.07	62.3	12.70	27	41.3	25.4	0.29
H11-15	15	61.09	66.3	12.70	31	47.0	25.4	0.36
H11-16	16	65.10	70.4	12.70	31	47.0	25.4	0.41
H11-17	17	69.11	74.5	12.70	36	54.0	25.4	0.47
H11-18	18	73.14	78.3	12.70	36	54.0	25.4	0.52
H11-19	19	77.16	82.3	12.70	36	54.0	25.4	0.53
H11-20	20	81.19	86.4	12.70	36	54.0	25.4	0.56
H11-21	21	85.22	90.5	12.70	46	70.0	25.4	0.59
H11-22	22	89.24	94.5	12.70	46	70.0	25.4	0.62
H11-23	23	93.27	98.6	12.70	46	70.0	25.4	0.65
H11-24	24	97.29	102.6	12.70	46	70.0	25.4	0.68
H11-25	25	101.33	106.5	12.70	46	70.0	25.4	0.72
H11-26	26	105.36	110.5	12.70	46	70.0	25.4	0.76
H11-27	27	109.40	114.6	19.05	46	70.0	31.8	1.03
H11-28	28	113.42	118.6	19.05	46	70.0	31.8	1.06
H11-29	29	117.46	122.7	19.05	46	70.0	31.8	1.22
H11-30	30	121.50	126.8	19.05	46	70.0	31.8	1.30

Sprocket Series H11A for 1/2" Pitch Narrow Series Chain Ref. 08B-1

Cat No.	No. Teeth	Pitch Circle Ø dp	Outside Ø do max.	Stock Bore d H8	Max. Bore d max.	Hub dia. A	Length L	App. Weight kg
H11A-10	10	41.10	46.3	12.70	18	27.0	25.4	0.11
H11A-11	11	45.07	50.3	12.70	18	27.0	25.4	0.14
H11A-12	12	49.07	54.4	12.70	24	35.0	25.4	0.18
H11A-13	13	53.06	58.2	12.70	24	35.0	25.4	0.24
H11A-14	14	57.07	62.3	12.70	27	41.3	25.4	0.29
H11A-15	15	61.09	66.3	12.70	31	47.0	25.4	0.36
H11A-16	16	65.10	70.4	12.70	31	47.0	25.4	0.41
H11A-17	17	69.11	74.5	12.70	36	54.0	25.4	0.47
H11A-18	18	73.14	78.3	12.70	36	54.0	25.4	0.52
H11A-19	19	77.16	82.3	12.70	36	54.0	25.4	0.53
H11A-20	20	81.19	86.4	12.70	36	54.0	25.4	0.56
H11A-21	21	85.22	90.5	12.70	46	70.0	25.4	0.59
H11A-22	22	89.24	94.5	12.70	46	70.0	25.4	0.62
H11A-23	23	93.27	98.6	12.70	46	70.0	25.4	0.65
H11A-24	24	97.29	102.6	12.70	46	70.0	25.4	0.68
H11A-25	25	101.33	106.5	12.70	46	70.0	25.4	0.72
H11A-26	26	105.36	110.5	12.70	46	70.0	25.4	0.76
H11A-27	27	109.40	114.6	19.05	46	70.0	31.8	1.03
H11A-28	28	113.42	118.6	19.05	46	70.0	31.8	1.06
H11A-29	29	117.46	122.7	19.05	46	70.0	31.8	1.22
H11A-30	30	121.50	126.8	19.05	46	70.0	31.8	1.30

All dimensions in mm.
Stock Sprockets can be reworked to customers bore and keyway requirements.

Tel +44(0) 121 360 0155

Fax +44(0) 121 325 1079

Email sales@crossmorse.com